

Ca' Borin Library:

Geography, Economy, Newspapers Library

Bibliographic sources and facilities



Kick-off Seminar

24/09/2024



by Carla Patrizia Dani

The University Library System

Padua University Library system has chosen an organization by **network of libraries**.

The network of the **Social Sciences Libraries** is called Polo of Social Sciences and includes the following libraries:

- **Ca' Borin Library**: Economics, Geography, Social Sciences Newspapers Library
- **Political Sciences Library**
- **Comparative Law Library**
- **Statistical Library**



Questa foto di Autore sconosciuto è
concesso in licenza da CC BY

Where are we?

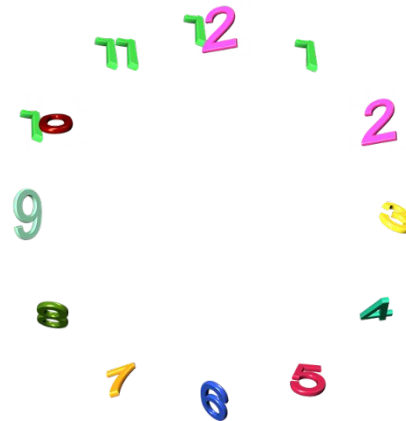
Ca' Borin Library

Economics, Geography, Social Sciences Newspapers Library

Via del Santo, 22 – 35122 Padova



Opening hours:
Monday-Friday
9.00-22.45



Book a sit or a computer through the app



Affluences 4+

Affluences

#40 in Utility

★★★★★ 4,4 • 334 valutazioni

Gratis

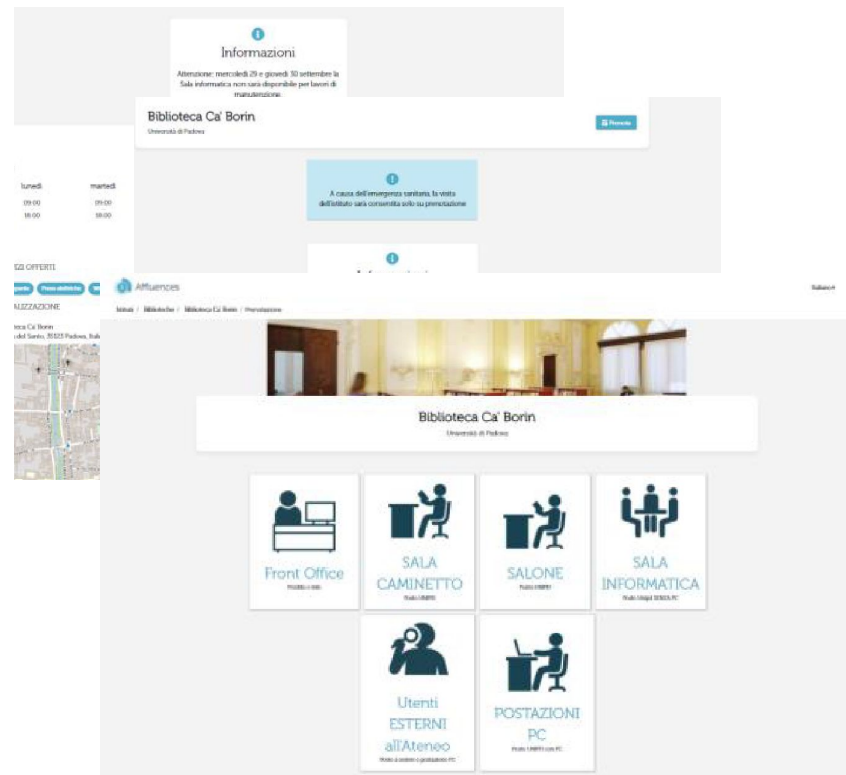
Affluences

Check the Library occupancy in real time on the mobile Affluences application.

The Application shows :

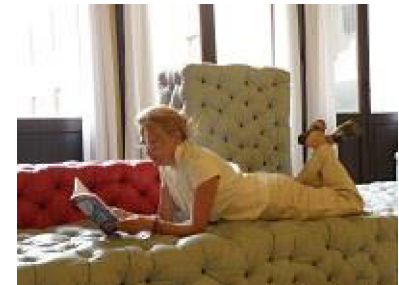
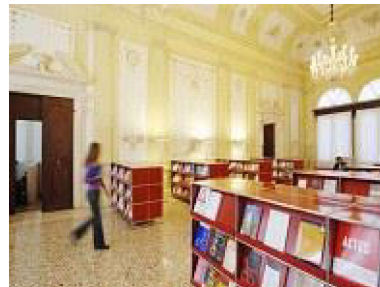
- the current occupancy of the Libraries
- the forecast for the rest of the day, hour by hour
- the opening hours and exceptional closings
- practical information, equipments, contacts
- the chance to book a seat

Download the *Affluences* application, available for iPhone and Android



What you can find in our Library

- Reading rooms
- Books and coursebooks
- Journals
- Copy machines
- Computers
- Librarians 😊



Using Library's PC

Log in with SSO (Single SignOn)

name.surname@studenti.unipd.it



Using your personal device

Free WIFI is available in many University's buildings through **EDUROAM**, a world-wide roaming access service developed for the international research and education community.



... always with you!

To access Padova University electronic resources **on your personal device**, you need to activate the **auth-proxy service**.

Access the online sources,
wherever you are.

Remember to respect **copyright rules**.



<http://bibliotecadigitale.cab.unipd.it/en/auth-proxy>

Are you looking for a book, an article or a journal?



- It allows an integrated and **simultaneous search** of the University's document collections starting from a **single interface**
- It is **responsive**: it can be used in all devices (pc, tablet, smartphone, ...)
- It is simple, user-friendly and **accessible**

Book loan

□ BORROWING

You must show your student card to borrow a book

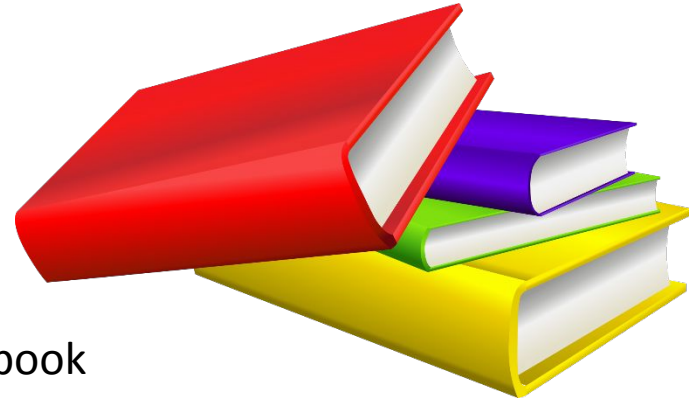
You can borrow **up to 15 books for a month** in a library

□ RENEWAL AND RESERVATIONS

By the due date you can **renew the loan of books that are not reserved** up to 6 months. You can also **reserve a borrowed book**. When the volume will come back, you will be notified by telephone or e-mail.

□ DOCUMENTS EXCLUDED FROM LOAN

- journals (periodicals, magazines, newspapers, maps...)
- works printed before 1900, rare books, fine or in poor conditions
- consultation documents (encyclopedias, dictionaries, etc..)



Myprint copying and printing service

You may **photocopy or print** part of book/journal, according to **copyright laws**, using your student card (register to Myprint Service)

<http://unipd.albamyprint.it>

Instructions for registration are available [here \(.pdf\)](#).



Questa foto di Autore sconosciuto è concesso in licenza da [CC BY-NC](#)

Don't you find books in Padua?

Make an **Interlibrary Loan Request (ILL)**
to Ufficio Centrale per il Prestito Interbibliotecario



<http://bibliotecadigitale.cab.unipd.it/en/interlibrary-loan/interlibrary-loan-service>

Don't you find a journal article in Padua?

Make a **Document Delivery Request**
through **NILDE**

It's for free!



<https://bibliotecadigitale.cab.unipd.it/en/using-the-libraries/document-delivery>

Training courses and reference service

You may attend our periodical training courses:

- ❖ **101 LIBRARY** on "information competence", to understand how to carry out a **bibliographic search and use the sources appropriately** (Moodle + Laboratory)
- ❖ **MANAGING YOUR BIBLIOGRAPHY: the ZOTERO software**: practical exercises for learning, creating and organizing the literature and inserting recommendations in the text of documents (Laboratory) - **A monthly English edition.**

REFERENCE SERVICE

If you are writing your thesis and you **need help, you can ask a librarian to help you search library resources and materials.**

Self training and online resources

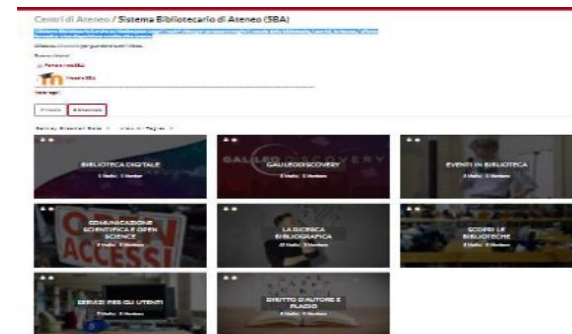
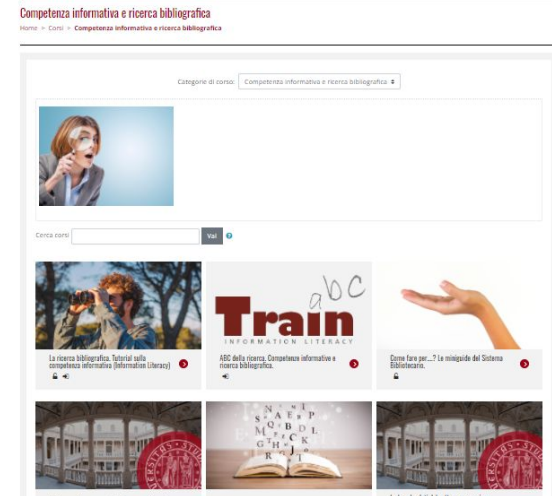
MOODLE SBA

You can find online preparatory tutorials to the courses and bibliographic research and how to do on Moodle [Competenza informativa e ricerca bibliografica](#):

- Bibliographic Citations And Plagiarism
- Databases Of The Economic-business Sector
- How To Write The Degree Thesis

MEDIASPACE

Library system is also on [MEDIASPACE](#) (SBA):
discover our services.



1222-2022
800 ANNI



UNIVERSITÀ
DEGLI STUDI
DI PADOVA

SBA SISTEMA BIBLIOTECARIO
DI ATENE0

Additional information in [our website](#)



UNIVERSITÀ
DEGLI STUDI
DI PADOVA



SISTEMA BIBLIOTECARIO
DI ATENE0

Biblioteca di Geografia, Scienze Economiche e Aziendali ed Emeroteca "Ca' Borin" Polo di Scienze Sociali

HOME USA LE BIBLIOTECHE COSA CERCHI ECONOMIA GEOGRAFIA COLLEZIONI DIGITALI CHI SIAMO

Tu sei qui: [Home](#)

Seguici



Biblioteche di Economia e Geografia - Emeroteca

DOVE SIAMO

Via del Santo, 22 - 35123 Padova ([mappa](#))

Telefono: +39 049 8271515

Email: emeroteca.caborin@unipd.it

LABORATORI E WEBINAR

ABC della ricerca

La bibliografia con Zotero

Le banche dati del settore economico-aziendale: utilizzo, strategie di ricerca e servizi connessi

SPECIALE LAUREANDI

Guide e materiali informativi

ORARI

Giorno	Mattina	Pomeriggio
Lunedì - Venerdì	dalle 09 alle 18	
Sabato - Domenica	Chiuso	

SOSPENSIONE ORARIO PROLUNGATO (fino al 2 ottobre)

CARTOTECA. Per la consultazione delle mappe geografiche si consiglia la prenotazione via mail.

Effettua la **prenotazione telematica** del tuo **POSTO STUDIO** attraverso l'App Affluences ([App Store](#) / [Google Play](#)) o attraverso Affluences via web

Prenota la Sala per gruppi di studio **New!**

Ultime notizie

[Nuova modalità di accesso alla banca dati EIKON](#)

30/08/2023

[ABC della ricerca: corsi di SETTEMBRE](#)

07/07/2023

[Gestione bibliografie: laboratori online su Zoom](#)

30/06/2023

[Altre notizie...](#)

AVVISI

Il servizio di Prestito interbibliotecario verrà sospeso per tutto il mese di agosto.



1222-2022
800
ANNI



UNIVERSITÀ
DEGLI STUDI
DI PADOVA

SBA SISTEMA BIBLIOTECARIO
DI ATENEVO

Visit Digital Library

<http://bibliotecadigitale.cab.unipd.it/en>

The screenshot shows the SBA website interface. At the top, there are navigation links for 'Unipd', 'Departments', 'Univweb', and 'Webmail' on the left, and 'Helpline', 'About us', 'Staff restricted area', and 'Admin' on the right. Below this is a dark red header with the SBA logo and 'SISTEMA BIBLIOTECARIO DI ATENEVO' on the left, and a search icon, 'ITA', and 'MENU' on the right. The main content area features a large background image of a historical architectural plan. A search bar with the text 'GALILEO DISCOVERY Search books, articles...' is overlaid on the plan. Below the search bar, there are several menu items: 'About publishing', 'Off-campus connection', 'MLOL Portal - Media Library Online', and 'News from the University of Padua'. A dark grey box on the right contains 'Need help?' and 'Ask the Library Helpline >'. At the bottom, there is a section titled 'UNIVERSITY LIBRARY SYSTEM' with three images and corresponding links: 'Using the Libraries >', 'Search Tools >', and 'List of Libraries (ITA) >'.

Last but not least...ask a librarian!

How to

search for a book, a journal

search on databases

manage bibliographic information

evaluate and use online bibliographic
sources

and much more!



Contact us for any other reasonable doubt

1222-2022
800
ANNI



UNIVERSITÀ
DEGLI STUDI
DI PADOVA

SBA SISTEMA BIBLIOTECARIO
DI ATENEIO

Thank you

To contact us

emeroteca.caborin@unipd.it

carla.dani@unipd.it

+39 049 8271515

