

UNIVERSITÀ
DEGLI STUDI
DI PADOVA

Second Cycle Degree Course in
Local Development

Kick-Off Seminar - September 23th-26th 2024

Study methods, etiquette and responsibilities
in the program and the university

Prof. Silvia Elena Piovan



In this PPT:

- **Study methods**
 - How this program is organized
 - How to approach the program
 - Integrated courses and report expiration
 - Thesis request
- **Etiquette**
 - How to send email to professors
 - Be on time at lessons
 - Avoid impossible requests to professors
- **Responsibilities**
 - Plagiarism
 - Cheating on exams



How this program is organized

- **2 years, 2 semesters per year:**
 - 1st semester: from October to January
 - 2nd semester: from March to June
- 1st, 2nd and 3rd semester: **four or five teaching modules per semester**
- **The 4th semester is for internship and thesis**



How this program is organized

- Teaching modules may vary by credits (typically 6 but also 9 and 12)

- 1 credit means:

- 7 hours of lectures
- 14 hours of individual work

For example:

<u>GEOGRAPHY FOR LD: THEORY AND PRACTICE (I.C.)</u>	12 ETCS
Mod. A “Geographical Space: Concept, tools and practice”	6 ETCS (42 h)
Mod. B “GIS: Mapping and Analysis”	9 ETCS (63 h)

- Some courses are compulsory, some are optional



How this program is organized

- **Attendance is not mandatory BUT be aware of:**
 - Warmly suggested
 - Different teaching organisation (workgroup,...)
- **There are 3 sessions of exams each year:**
 - Winter session (January-February): at the end of the 1st semester
 - Summer session (June-July): at the end of the 2nd semester
 - An extra session (September)
- **You may be required to pass an exam (written or oral), or write a paper or a project ... or maybe both, or even other forms of assessment**



How this program is organized

- **Grades in the Italian university system:**
 - 30-point scale
 - The **minimum passing grade is 18 out of 30 possible.**
 - The **maximum is "30/30 e lode"** (30 out of 30 cum laude)



How to approach the program

- Topics:

Economics

Geography

Sociology

Statistics

GIScience

Project planning

Participatory methods

Anthropology

Political science

- The class's basic training is not homogeneous
- Different professors, different didactical methods → practical richness

How to approach the program

- Language:



- Don't get too hung up on accuracy!
It's more important to be **comfortably intelligible**.





How to approach the program

- LD students have earned an undergraduate degree... but... this is a **master degree**, not exactly the same!
- **Methods of study:**
 - Do I need to learn a “study method”?
 - Is this master's program different from what I did before? Do I need some tips?



How to approach the program

- **Tips to successfully deal with LOCAL DEVELOPMENT Master's degree**
 - Start studying from the first class and keep the study updated with the lessons
 - Organize a study group
 - Do the homework
 - During the lessons, ask if you don't understand
 - Participate (in every sense)
 - Read emails and Moodle communications by professors
 - Perseverance = attend classes

How to approach the program

- **Methods of teaching:**

- Lectures
- Workgroups
- Desk research
- Class discussion with peers and lectures
- Computer laboratory
- Laboratory in the field
- Transformative learning methods
- Presentations (of papers or projects, individually or in groups)
- Role games
- Seminars
- Videos





How to approach the program

- **Evaluation:**

- **Professors will evaluate your study performance with a:**

- Oral exam
- Written exam
- Project presentations
- Papers
- ...

- **Students will be asked to evaluate the various aspects of each course!**

- Students' course evaluation is one of the elements of the evaluation of the Local Development Degree course as a whole.
- Evaluation is a SERIOUS thing. Be objective, precise and honest.



How to approach the program

- **Integrated courses and report expiration:**
 - Integrated courses are composed by two modules and each module has its own exam and grade.
 - If a module of an integrated course requires the delivery of a report/project/etc., it will be valid within the academic year of delivery.



How to approach the program

- **Thesis request**

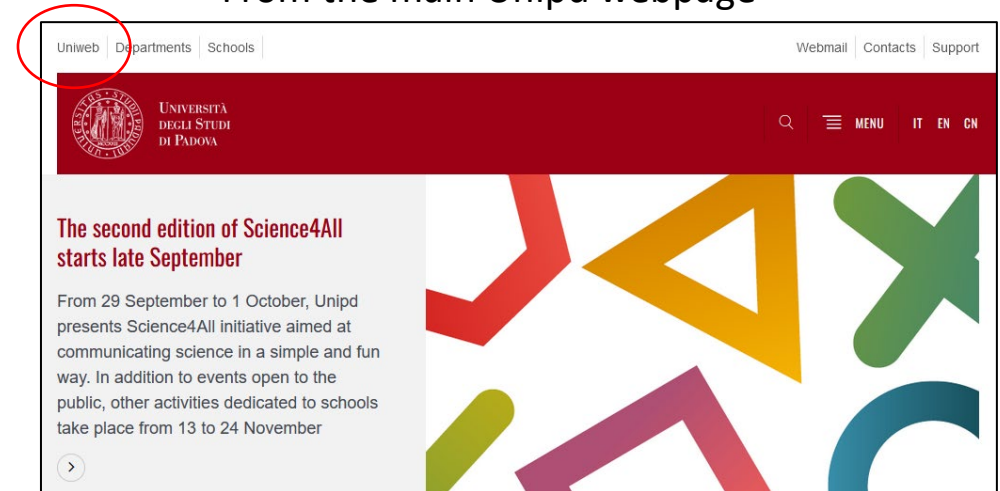
- Do not ask too early nor too late for the thesis
- When you ask to a professor to be your thesis' supervisor, usually you have two major choices:
 - You propose a topic
 - The professor suggests to you a topic
- If you propose a topic, it should be original and structure, methods and theoretical approach should be discussed together with the supervisor.

How to approach the program

- **Online platforms:**

- **Uniweb:** to manage exam registration, mobility, degree registration,...

From the main Unipd webpage



- **Moodle:** to manage didactical material (information, timetable, study materials, date of the exams, and (on the specific moodle of courses) pdf of lessons, pools, online tests, online discussions,...)

From the main DiSSGeA webpage (at the bottom of the page)





Etiquette

- **How to send emails to a professor**

- Most professors teach in different programs and have hundreds of students.
- Introduce yourself (name, program, year of enrollment and when you attended the course).
- Explain clearly your needs and request, being kind.

- **Be on time at lessons**

- **Avoid impossible requests to professors**

- Increase grade
- Change date of exam or re-do exam out of the official sessions
- Repeat lessons

- **It is kind to advise a professor** if you registered for the exam and then you cannot attend.



Responsibilities

- **Plagiarism**

- **What is plagiarism?** *"The process or practice of using another person's ideas or work and pretending that it is your own"* (Cambridge Dictionary)
- **Plagiarism is against the University rules and Italian law!!!**
- **Possible consequences:** *"many universities provide serious sanctions (up to expulsion) for a student who is caught cheating. In Italy law n. 475/1925 amended in 1999 establishes that presenting completely or partially copied works as one's own constitutes a crime"* (UniPD website)
- Professors have **tools to detect** plagiarism (we know ChatGPT...)

- **Cheating on exams**

- **It really is not worth trying to cheat...**

Geographic information system is a computer system for capturing, storing, checking, and displaying data related to positions on Earth's surface. By relating seemingly unrelated data GIS can help individuals and organizations better understand spatial patterns and relationships. The main goal of this project is to create a good map representing some geographic and cultural features of the Padova municipality industrial area and another map showing the area of "interporto" with orthophotos of 2007 and 2018, illustrating the changes that occurred between the two periods. The industrial area of Padua occupies about one ninth the municipal area to the east of the city and hosts over 1400 companies. It is served by a railway connection with 7 km of tracks; from 2 motorway exits; 5 service centers with post offices, hotels, restaurants, banks, professional studios, business and personal services; and a 30 km fiber optic ring. 18% of its territory is destined to greenery.

For the Coordinated Reference System (CRS), it was set as Monte Mario / Italy zone 1 and the type & Source of data for this project was Vector and Raster. Data was used and the source of the data was downloaded from the Veneto Geoportale

GIS PROCESSES:

The project was carried out with QGIS. The CRS set for the project was Monte Mario / Italy zone 1. The data layers were brought into the project and put in shapefiles. These data were obtained from the website of Region Veneto (<https://idt2.regione.veneto.it/>). From these data layers, two themes were created: Padova municipality industrial area and another showing area of "interporto" with orthophotos of 2007 and 2018. In each theme, the symbology was customized to be appropriate for the creation of the layout. Once the two themes were customized and set, a new layout was created with two maps corresponding to the two themes. The two maps were simultaneously placed on the layout with other items such as scale bar, legend, north arrow, labels. Finally, thanks to the Export as Image function, the layout was exported in image format (.jpg) as seen in the GIS cartographic elaboration section.

RESULTS: Two layouts were created at the end of the project, the Padova Municipality map and an orthographic map comparison of the area between 2007 and 2018. It was also important to note how to set CRS for a project and how to adequately appropriate symbology for map layouts

GIS CARTOGRAPHIC ELABORATION

THEORETICAL CONTEXT

Geographic information system is a computer system for capturing, storing, checking, and displaying data related to positions on Earth's surface. By relating seemingly unrelated data, GIS can help individuals and organizations better understand spatial patterns and relationships. The main goal of this project is to create a good map representing some geographic and cultural features of the Padova municipality industrial area and another map showing the area of "interporto" with orthophotos of 2007 and 2018, illustrating the changes that occurred between the two periods.

GEOGRAPHIC CONTEXT

The industrial area of Padua occupies about one ninth of the municipal area to the east of the city and hosts over 1400 companies. It is served by a railway connection with 7 km of tracks; from 2 motorway exits; 5 service centers with post offices, hotels, restaurants, banks, professional studios, business and personal services; and a 30 km fiber optic ring. 18% of its territory is destined to greenery.

GIS METHOD USED

- For the Coordinated Reference System (CRS), it was set as Monte Mario / Italy zone 1
- Type & Source of Data: For this project, Vector and Raster data was used and the source of the data was downloaded from the Veneto Geoportale (<https://idt2.regione.veneto.it/>).

GIS PROCESSES UNDERTAKEN:

The project is carried out with QGIS. The CRS set for the project was Monte Mario / Italy zone 1. The data layers were brought into the project and put in shapefiles. These data were obtained from the website of Region Veneto (<https://idt2.regione.veneto.it/>). From these data layers, two themes were created: Padova municipality industrial area and another showing the area of "interporto" with orthophotos of 2007 and 2018. In each theme, the symbology was customized to be appropriate for the creation of the layout. Once the two themes were customized and set, a new layout was created with two maps corresponding to the two themes. The two maps were simultaneously placed on the layout with other items such as scale bar, legend, north arrow, labels. Finally, thanks to the Export as Image function, the layout was exported in image format (.jpg) as seen in the GIS cartographic elaboration section.

RESULTS: Two layouts were created at the end of the project, the Padova Municipality map and an orthographic map comparison of the area between 2007 and 2018. It was also important to note how to set CRS for a project and how to adequately appropriate symbology for map layouts

THEORETICAL CONTENT

A geographic information system (GIS) is a computer system for capturing, storing, checking, and displaying data related to positions on Earth's surface. By relating seemingly unrelated data, GIS can help individuals and organizations better understand spatial patterns and relationships. The main goal of this project is to create a good map representing some geographic and cultural features of the Padova municipality industrial area and another map showing the area of "interporto" with orthophotos of 2007 and 2018, illustrating the changes that occurred between the two periods.

GEOGRAPHIC CONTEXT

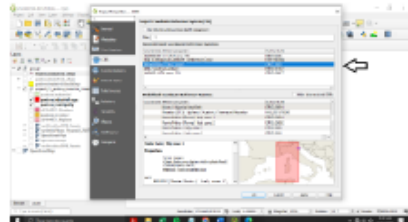
The industrial area of Padua occupies about one ninth of the municipal area to the east of the city and hosts over 1400 companies. It is served by a railway connection with 7 km of tracks; from 2 motorway exits; 5 service centers with post offices, hotels, restaurants, banks, professional studios, business and personal services; and a 30 km fiber optic ring. 18% of its territory is destined to greenery.

GIS METHOD USED

- For the Coordinated Reference System (CRS), it was set as Monte Mario / Italy zone 1
- Type & Source of Data: For this project, Vector and Raster data was used and the source of the data was downloaded from the Veneto Geoportale (<https://idt2.regione.veneto.it/>).

GIS PROCESSES UNDERTAKEN:

The project is carried out with QGIS. The CRS set for the project was Monte Mario / Italy zone 1.



The data layers were brought into the project and put in shapefiles. These data were obtained from the website of Region Veneto (<https://idt2.regione.veneto.it/>).

GIS CARTOGRAPHIC ELABORATION

Profile Tool

Profile Tool settings: Elevation scale from 0 to 140 meters. Options include 'Show cases' and 'Show profile'. The map shows a cross-section of a river valley with a road crossing it.

Adobe Acrobat Pro (64-bit)

File Modifica Vista Firma elettronica Finestra Aiuto

Home Strumenti

Commento

Chiudi

Profile Tool

Profile Tool settings: Elevation scale from 0 to 140 meters. Options include 'Show cases' and 'Show profile'. The map shows a cross-section of a river valley with a road crossing it.

Profile Tool

Profile Tool settings: Elevation scale from 0 to 140 meters. Options include 'Show cases' and 'Show profile'. The map shows a cross-section of a river valley with a road crossing it.

Adobe Acrobat Pro (64-bit)

File Modifica Vista Firma elettronica Finestra Aiuto

Home Strumenti

Profile Tool

Profile Tool settings: Elevation scale from 0 to 140 meters. Options include 'Show cases' and 'Show profile'. The map shows a cross-section of a river valley with a road crossing it.