



WELCOME BOOKLET

LOCAL DEVELOPMENT

A.Y. 2025/26



All the information you need can be found in this booklet
or on the programme's Moodle page.
Please check there before contacting us!

Dear students,

I am delighted to welcome you to the University of Padua, and specifically to the Master's degree programme in Local Development that I coordinate.

The programme you have chosen started in 2010. During these more than 10 years, the programme has changed, renewing itself to take into consideration the current challenges that 'local developers' have to face in this changing world. Contemporary societal, political, and environmental challenges require taking into account the complex dynamics intersecting local, regional and the global scales, and this is another fundamental perspective that our Master adopts.

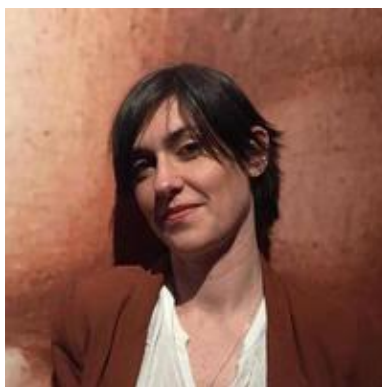
You are embarking in a 2-year journey. During this span of time, there will be time to study hard and time to relax and have fun with your friends; time to sit down in the library or in the study room and time to visit and travel. I suggest you use the skills you are taught in class to become local development practitioners as a tool to become part of the Padua's broader community, a citizen of this city as well as a citizen of the world.

The Master's degree programme in Local Development comprises a very diverse group of people, representing different genders, social classes, ethnic groups and we may have different physical and mental abilities. The respect for such differences is a key pillar for our community, and I encourage you to adopt an inclusive and respectful attitude towards your colleagues.

As we strongly believe in the importance of preserving the unique value of the educational experience of face-to-face learning, lessons will be fully held on-site in Padua. On an exceptional basis, alternative online or offline teaching methods will be offered only to international students who have already requested the Study Visa but have not received it yet.

I ask you to be cooperative with your fellow students, the administrative staff, and your professors. Working together is another basic principle of local development. I am ready to work, and I hope you are all in as well!

Wish you to make the best out of this learning experience!

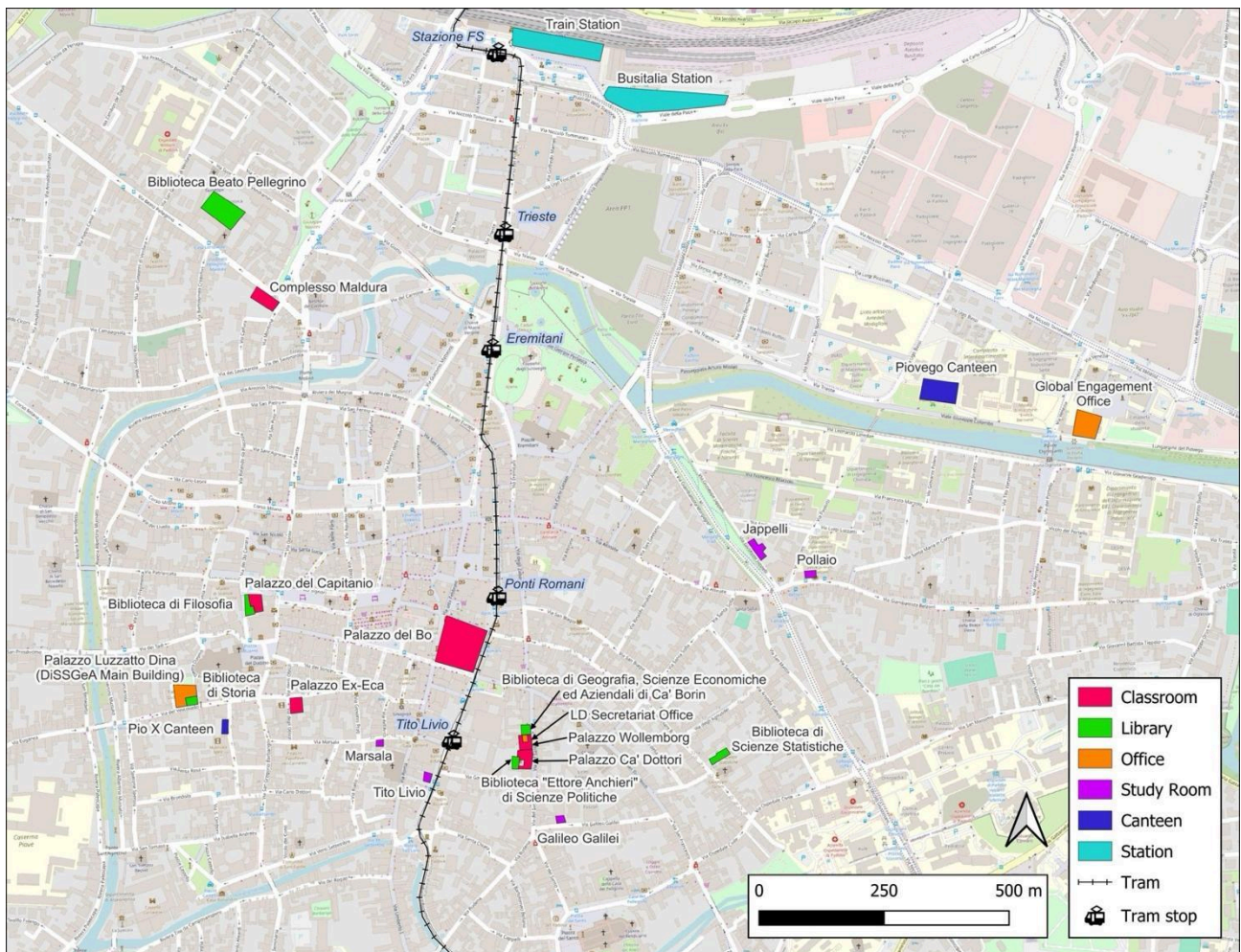


Prof. Chiara Rabbiosi
Head of the Master's degree programme in Local Development
Department of Historical and Geographic Science and the Ancient World
University of Padua

Table of contents

MAP OF PADUA	4
CAMPUS FACILITIES	5
STUDENT ADMINISTRATION	6
KEY ACADEMIC DATES	6
CLASSES, EXAMS, STUDY ROOMS SCHEDULE	6
MOODLE	6
STUDY PLAN	6
UNIWEB	6
FIRST YEAR COURSE UNITS – COHORT 2025/26	7
SECOND YEAR COURSE UNITS – COHORT 2024/25	9
LECTURERS	10
MOBILITY OPPORTUNITIES	20
ERASMUS+ AND OTHER EXCHANGE PROGRAMMES	20
LOCAL DEVELOPMENT PRIORITY DESTINATIONS	21
VIRTUAL AND BLENDED MOBILITY PROGRAMMES	23
MAIN CONTACTS	24

MAP OF PADUA



CAMPUS FACILITIES

Canteens

Mensa Pio X | Via Bonporti, 20

Mensa Piovego | Viale G. Colombo, 1

Libraries

Biblioteca Beato Pellegrino | via Beato Pellegrino, 28

Biblioteca di Filosofia | Piazza Capitaniato, 3

Biblioteca di Geografia, Scienze Economiche

Aziendali ed Emeroteca Ca' Borin | Via del Santo, 2

(entrance Via del Santo, 22)

Biblioteca "Ettore Ancieri" di Scienze Politiche | Via

del Santo, 28

Biblioteca di Scienze Statistiche | Via C. Battisti, 241

Biblioteca di Storia | Via del Vescovado, 30

Classrooms

Quiet Rooms (page in italian)

Study Rooms

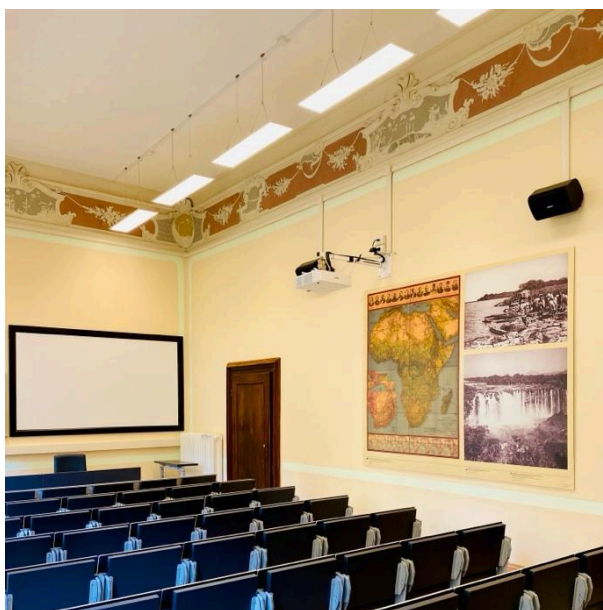
Aula studio Galilei | Via G. Galilei, 42

Aula studio Jappelli | Via Jappelli, 9

Aula studio Marsala | Via Marsala, 15

Aula studio Pollaio | Via Belzoni, 7

Aula studio Tito Livio | Galleria Tito Livio, 7



STUDENT ADMINISTRATION

Key Academic Dates

All the information about the Academic calendar (exam sessions, closing days, etc.) is available at the [dedicated web page](#).

Classes, exams, study rooms schedule

All the information is available on the [Student Web Agenda](#). Please note that course units may start on different days, and schedules and rooms may change week by week, therefore you should check the Agenda regularly.

Moodle

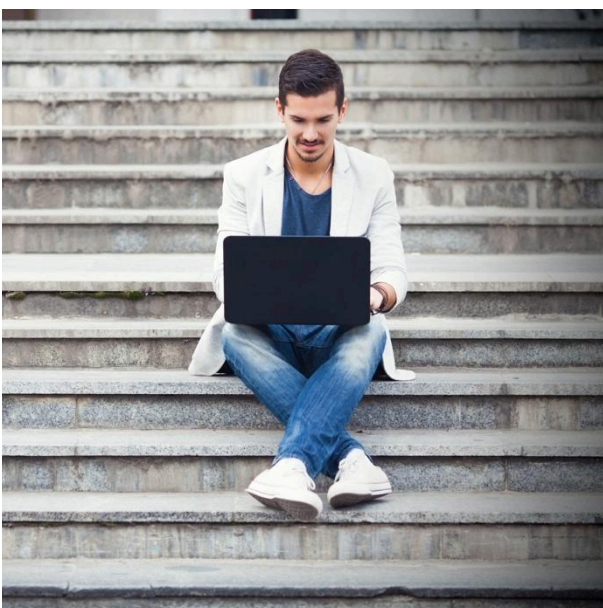
On the [Moodle platform](#) you can find all the information about Local Development, such as the syllabus and schedule for each course unit, teaching materials, case studies, exercises, reference texts, articles. You will receive the credentials upon enrolment, together with the email address and the credentials for [Uniweb](#) (see below).

Study Plan

The Study Plan (*Piano di studio*) lists all activities (exams, internships, labs, etc.) you must carry out to earn the CFU/ECTS required to graduate.

You should fill in your Study plan at the beginning of the A.Y. (from late October) to enable exam registration; it can be modified until you register for graduation.

To fill it out, go to [Uniweb](#): Login → Home → Study plan. Make sure to check all the relevant rules on [Moodle](#) beforehand.



Uniweb

[Uniweb](#) is the on-line platform that allows Unipd students to access all the information about their studies and directly manage their university career, from application to signing up for exams and registering for graduation. Professors use Uniweb to publish exam calls, exam grades and record exams.

FIRST YEAR COURSE UNITS – cohort 2025/26

FIRST SEMESTER

COMPULSORY COURSE UNITS	ETCS	HOURS	LECTURERS
<u>KICK-OFF SEMINAR</u>	1		
<u>TERRITORIAL STRATEGIC APPROACHES FOR LOCAL DEVELOPMENT</u>	6	42	CELETTI D.
<u>GEOGRAPHY FOR LOCAL DEVELOPMENT: THEORY AND PRACTICE (Integrated course – <i>Corso Integrato</i>):</u>			
<u>GEOGRAPHICAL SPACE: CONCEPT, TOOLS AND PRACTICE (mod. A)</u>	6	42	PEPA M.
<u>GIS: MAPPING AND ANALYSIS (mod. B)</u>	9	63	PIOVAN S.E.

1 COURSE UNIT OF YOUR CHOICE AMONG:	ETCS	HOURS	LECTURERS
<u>ECOLOGICAL AND SOCIAL PRINCIPLES IN ECONOMICS</u>	6	42	BELARDINELLI S.
<u>STATISTICS FOR SOCIAL SCIENCE</u>	6	42	TOSI M. GIRALDO A.
<u>SOCIAL RESEARCH METHODOLOGY</u>	6	45	BASSOLI M.
<u>LOCAL DEMOCRACY</u>	6	45	NESTI G. DOMORENOK E.

During the 1st or 2nd year, you **should** complete one of the following course units (more information is provided during the Kick-off Seminar):

1 LANGUAGE COURSE UNIT BETWEEN:	ETCS
<u>ADDITIONAL LANGUAGE</u>	3
<u>LINGUA ITALIANA</u>	3

SECOND SEMESTER

COMPULSORY COURSE UNITS	ETCS	HOURS	LECTURERS
<u>CIRCULAR ECONOMICS AND LOCAL DEVELOPMENT</u>	6	42	GAMBAROTTO F.
<u>TERRITORIAL GOVERNANCE AND PUBLIC POLICIES</u>	6	42	DOMORENOK E.
<u>PROJECT PLANNING AND QUANTITATIVE METHODS</u> (Integrated course – <i>Corso Integrato</i>):			
<u>STATISTICAL METHODS FOR LOCAL DEVELOPMENT</u> (mod. A)	9	70	GIRALDO A. SIRONI M.
<u>ESSENTIALS OF PROJECT PLANNING, MONITORING AND EVALUATION</u> (mod. B)	6	42	POZZA A.

1 COURSE UNIT OF YOUR CHOICE BETWEEN:	ETCS	HOURS	LECTURERS
<u>SOCIAL DYNAMICS IN LOCAL DEVELOPMENT</u>	6	42	TBA
<u>SOCIAL AND POLITICAL TOURISM GEOGRAPHIES</u>	6	42	RABBIOSI C.

SECOND YEAR COURSE UNITS – cohort 2025/26

FIRST SEMESTER

COMPULSORY COURSE UNITS	ETCS	HOURS	LECTURERS
<u>TRANSFORMATIVE LEARNING, PARTICIPATION AND GROUP DYNAMICS</u>	6	42	POSADA GONZALEZ D.
<u>FIELDWORK FOR LOCAL DEVELOPMENT</u>	6	42	PASE A. RIZZOLI V. TBA
<u>MICROFINANCE FOR LOCAL DEVELOPMENT</u>	6	42	LANZAVECCHIA A.

1 COURSE UNIT OF YOUR CHOICE BETWEEN:	ETCS	HOURS	LECTURERS
<u>SPACE, PLACE AND MOBILITY</u>	6	42	RABBIOSI C.

<u>COMMUNITY, LOCALITY AND CULTURAL HERITAGE</u>	6	42	MILICIA M.T.
--	---	----	--------------

Please note that 2nd year professors might change in A.Y. 2026/27

ELECTIVE CREDITS

You must choose between 9 and 12 ECTS at your discretion (elective credits).

These credits can be selected either from courses you have not yet chosen within the Master's degree in Local Development, or from other Master's programmes at Unipd, provided that they are designated as optional course units (see the [Unipd Educational Offer catalogue](#)).

If you participate in a Mobility Programme (such as Erasmus, Ulisse, etc.), we strongly recommend selecting course units available at your host university.

We encourage you to choose course units that are meaningful to you and aligned with your career goals or skills you wish to develop.

For your reference, please find below a list of Unipd course units chosen by other students:

- [Ethics and environmental economics](#)
- [Gender EU politics and globalisation](#)
- [Green care: from ideas to enterprise](#)
- [Health, gender and migrations](#)
- [Landscape protection and design](#)
- [Regional planning](#)
- [Work, migration and globalization](#)
- [Policy Evaluation](#)
- [International Relations](#)
- [Environmental Assessment and Evaluation](#)
- [Agroecology and Territorial Management](#)

Sometimes students also choose language course units from the Master's degree programme in Linguistics.

LECTURERS



Prof. Matteo Bassoli

matteo.bassoli@unipd.it

SOCIAL RESEARCH METHODOLOGY - [syllabus](#)

I am a political scientist, and my research interests lie primarily in the domain of public policies. I have developed a solid research track with different methodological approaches. Within this perspective, I deal with the following topics:

- local ruling mapping
- geo-referencing local policies
- data imputation
- survey creation
- empirical research
- social network analysis

I encourage students to conduct empirical research based on their interest and the methodologies learnt during the course.

[Office hours, proposal for thesis and additional information](#)



Prof. Sofia Belardinelli

sofia.belardinelli@unipd.it

ECOLOGICAL AND SOCIAL PRINCIPLES IN ECONOMICS - [syllabus](#)

I hold a PhD in Environmental Ethics and currently work as a postdoctoral researcher at the Department of Biology, University of Padova, within the National Biodiversity Future Center. My research explores the complex relationships between humans and nonhuman nature, with a particular focus on relational values. During my PhD, I studied biocultural diversity in Southern Italy, examining how local communities assign different meanings and values to nature.

I approach environmental issues through an interdisciplinary lens, drawing on philosophy of science, evolutionary biology, and ethics. My work on relational values of the environment has increasingly connected me to the field of ecological economics – a ‘heterodox’ and interdisciplinary space that helps me bridge conceptual thinking with practical challenges (i.e., the ‘science-to-policy interface’).

Currently, I serve as a Research Fellow and Contributing Author for the Seventh Global Environment Outlook (GEO-7) of the United Nations Environment Programme.

I’m also active as an environmental journalist for several Italian cultural and scientific magazines, including *Il Bo Live*, the digital magazine of the University of Padova.

[Office hours, proposal for thesis and additional information](#)



Prof. David Celetti

david.celetti@unipd.it

TERRITORIAL STRATEGIC APPROACHES FOR LOCAL DEVELOPMENT - [syllabus](#)

My research interests are focused on Economic and Social History, with particular attention to the processes that sustained, or hampered, economic growth and social development. In particular I have tackled such issues as the role of pluri-activity in rural households:

- the causes and long-term consequences of the social and national division of labour
- the role of institution, technological transfer and labour organisation in promoting economic growth
- the paths of transition from agriculture to industry in Western European countries
- the causes and modalities of transformation of planned into market-oriented economies, with particular reference to the USSR and China
- the coexistence in time and space of different development's structures
- the potentialities of local sustainable development, of green and blue economy

[Office hours, proposal for thesis and additional information](#)



Prof. Ekaterina Domorenok

ekaterina.domorenok@unipd.it

TERRITORIAL GOVERNANCE AND PUBLIC POLICIES - [syllabus](#)

LOCAL DEMOCRACY - [syllabus](#)

I am a political scientist, and my research interests lie primarily in the domain of public policies. I have developed a solid research and consultancy experience in such policy areas as territorial development, environmental protection, sustainable development and climate change in a multi-level perspective, with particular regard to the European context. Within this perspective, I deal with the following topics:

- policy and governance transformations at different territorial levels
- the role of policy actors in institutional and policy change
- decentralisation and territorial governance reforms
- policy innovation and learning
- policy networks and polycentric policy regimes
- sustainability governance and public participation.

[Office hours, proposal for thesis and additional information](#)



Prof. Francesca Gambarotto

francesca.gambarotto@unipd.it

CIRCULAR ECONOMICS AND LOCAL DEVELOPMENT - [syllabus](#)

- Local experiences for the development of a circular economy
- The cognitive process of a local community for the application of the circularity principle
- The coordination of local economic agents to develop local economic connections
- The empirical analysis can be unfolded with indexes or interviews. Quantitative and qualitative investigations are both welcome.

[Office hours, proposal for thesis and additional information](#)



Prof. Anna Giraldo

anna.giraldo@unipd.it

STATISTICAL METHODS FOR LOCAL DEVELOPMENT - [syllabus](#)

STATISTICS FOR SOCIAL SCIENCE - [syllabus](#)

I am an applied statistician with research interests mainly concentrated on the social and economic aspects of the phenomenon. In particular, I am interested in the measurement of economic and social issues such as poverty and labour force participation. Other research interests are:

- students' career in higher education
- effect of the economic crisis in family dynamics
- data quality in sample survey
- compensation for missing data
- data collection
- impact evaluation of public or local development policies (from the design to the implementation and data collection)

[Office hours, proposal for thesis and additional information](#)



Prof. Diego Posada Gonzalez

diego.posadagonzalez@unipd.it

TRANSFORMATIVE LEARNING, PARTICIPATION AND GROUP DYNAMICS
- [syllabus](#)

I am an educator and researcher with a focus on education for sustainable futures, participatory action methods, and land-based pedagogies from an intercultural perspective. I am deeply committed to fostering transformative learning environments that address local and global challenges through innovative and context-sensitive educational and research practices.

My research has focused on:

- Sustainability, political and dialogic education in secondary schools
- planetary, place-based and transformative education
- inclusion of the climate crisis and sustainability in national curricula
- multiple case studies and participatory methodologies

[Office hours, proposal for thesis and additional information](#)



Prof. Alberto Lanzavecchia

alberto.lanzavecchia@unipd.it

MICROFINANCE FOR LOCAL DEVELOPMENT - [syllabus](#)

I believe that the duty of a researcher does not end either at the end of a lecture to students or in a publication in a prestigious magazine read only by "insiders", but continues towards the search for truth, through methodical doubt and tolerance of other people's ideas, and its dissemination to all citizens. This is the only way to contribute to the good and progress of society. Themes of thesis research:

- Climate change, adaptation strategies and microfinance
- UNESCO MaB and community-based tourism: the role of microfinance
- Microfinance and local development: case studies
- Business driving local conflicts: case studies

[Office hours, proposal for thesis and additional information](#)



Prof. Maria Teresa Milicia

mariateresa.milicia@unipd.it

COMMUNITY, LOCALITY AND CULTURAL HERITAGE - [syllabus](#)

I am a cultural anthropologist, and my ethnographic fieldwork mostly takes place in Southern Italy with a focus on social processes of "production of locality." My main research areas include:

- Social construction of identities and locality, politics of memory, "post-meridionalist" activism, performances of the past in heritage communities
- History of anthropology with a focus on racial anthropology, scientific racism, colonial collections of human remains and repatriation studies.

[Office hours, proposal for thesis and additional information](#)



Prof. Giorgia Nesti

giorgia.nesti@unipd.it

LOCAL DEMOCRACY - [syllabus](#)

I am a political scientist, and my research interests focus primarily on public policy, local innovation, e-government, ICT policies, smart cities and public administration. I am the Scientific Director with Matteo Bassoli of 'URBES – Observatory on Urban Policies' at the [Centre for Regional Studies 'Giorgio Lago'](#) at the University of Padua. I'm also coordinating a Bachelor's degree in Political Science at the Department SPGI.

My specific topics of interests are:

- Innovation in cities
- Smart cities
- Living labs
- Public sector innovations
- Digital innovation and governance
- Urban inequalities
- Participatory and multi-level decision-making
- European policies for social innovation and urban contexts

[Office hours, proposal for thesis and additional information](#)



Prof. Mariasole Pepa

mariasole.pepa@unipd.it

GEOGRAPHICAL SPACE: CONCEPTS, TOOLS AND PRACTICE - [syllabus](#)

I am currently a postdoctoral researcher at DiSSGeA, University of Padua, where I completed my Ph.D. in Human Geography, focusing on China-Africa agricultural cooperation. Additionally, I serve as an associate researcher at CEDEJ-Khartoum and as Vice-President of the Italian Association on Africa-China Studies (AISAC).

My ongoing research is part of the AtlaSahel project, which examines the complexities of land and water issues in Sudan while engaging with Sudanese communities displaced in Cairo. My work sits at the intersection of critical geography and decolonial approaches to development, with a particular interest in the shifting geographies of development. Specifically, I investigate the role of both new and old actors in reshaping African rural spaces, particularly concerning land and water conflicts. Furthermore, I am keenly interested in transformative initiatives (Kothari et al., 2019) and in pluralising geographical understandings of space and time (Radcliffe, 2022).

[Office hours, proposal for thesis and additional information](#)



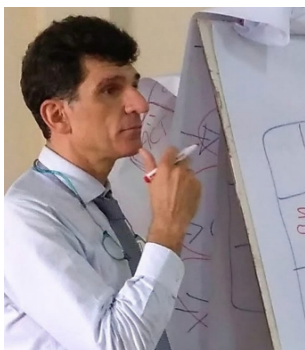
Prof. Silvia E. Piovan

silvia.piovan@unipd.it

GIS: MAPPING AND ANALYSIS - [syllabus](#)

I am a geographer, with a focus on the geohistorical evolution of the human-environmental relationships in the alluvial plains. My approach typically involves both local and regional scales of analysis. In particular, I am interested in both theoretical and practical approaches that belong to disciplines as geohistory, historical ecology, environmental history and military geography. My research is often developed within a diachronical framework and uses a geohistorical approach that includes different methodologies such as analysis of historical maps, historical documents, diaries, (aerial) photos, newspapers, drawings, interviews, agricultural and marine reports, and field survey. The collected data are processed in a geographical information system (GIS) platform that allows a comparative (multilayer), multiscale, analytical and georeferenced analysis.

[Office hours, proposal for thesis and additional information](#)



Prof. Andrea Pozza

andrea.pozza@unipd.it

ESSENTIALS OF PROJECT PLANNING, MONITORING AND EVALUATION - [syllabus](#)

I am a free-lance expert focus on setting up Monitoring and Evaluation system of organizations, project and policies in developing countries (mainly Africa and Asia). I started to work in the agricultural sector but presently I am involved in projects/policies covering different sectors (public health, tourism, vocational training, irrigation).

The M&E systems I design and/or improve are based on “Result Based Management” (RBM) approach which focuses mainly on effects of the project and changes made rather than on activities or events implemented. In other words, it assesses “changes that have occurred due to the intervention” rather than “achievements made by the project”. These systems are designed to stimulate maximum 'buy-in' from data generators and users within and outside the intervention. Thus, project staff assume primary responsibility for its design, implementation, monitoring and review.

[Office hours, proposal for thesis and additional information](#)



Prof. Chiara Rabbiosi

chiara.rabbiosi@unipd.it

SOCIAL AND POLITICAL TOURISM GEOGRAPHIES - [syllabus](#)

SPACE, PLACE AND MOBILITY - [syllabus](#)

I am a human geographer with a very interdisciplinary background, nurtured by a variety of perspectives coming from the Social Sciences and the Humanities. I am a member of DiSSGeA's [Centre for Advanced Studies Mobility&Humanities-MoHu](#).

My main research areas include:

- Tourism and society: meanings, practices, policies, conflicts
- Cultural heritage, space and power dynamics
- Embodied mobilities: walking, cycling, commuting
- Food cultures, circulation and the creation of geographical association
- Europeanisation and Europeanness from the bottom-up
- Qualitative methods and creative methodologies

[Office hours, proposal for thesis and additional information](#)



Prof. Maria Sironi

maria.sironi@unipd.it

STATISTICAL METHODS FOR LOCAL DEVELOPMENT - [syllabus](#)

I am a social demographer, currently an Associate Professor in Social Statistics at the Department of Statistical Sciences, University of Padova (since October 2024). I obtained my PhD in Demography at University of Pennsylvania in 2013 and I was a Postdoctoral Researcher at University of Oxford between 2013 and 2015. I started as an Assistant Professor in Quantitative Sociology at University College London - Social Research Institute in 2015. I have been an Associate Professor in Quantitative Sociology at University College London - Social Research Institute. from 2018 until September 2023. My research is focused on determinants and consequences of different life course trajectories. I have investigated how different fertility and partnership trajectories influence mental and physical health of older people. I have worked on a range of other topics such as the fertility and subjective well-being, cohabitation, gender inequality, and sexual minorities. Currently, I am studying the interdependencies between living alone, loneliness and social isolation, and how isolation trajectories over the life course influence physical and mental health.

[Office hours, proposal for thesis and additional information](#)



Prof. Marco Tosi

marco.tosi@unipd.it

STATISTICS FOR SOCIAL SCIENCE - [syllabus](#)

I am an Associate Professor of Social Statistics in the Department of Statistical Sciences. Before joining this department, I held postdoctoral fellowships in Sociology and Social Demography at the University of Cologne, Collegio Carlo Alberto in Turin, and the London School of Economics and Political Science. My research interests span various aspects of social statistics and demography, including intergenerational relations, adulthood transition, implications of parenthood and marital break-up, and health inequality in ageing societies. My research typically focuses on intergenerational influences on health and wellbeing using a life-course longitudinal perspective.

[Office hours, proposal for thesis and additional information](#)

MOBILITY OPPORTUNITIES

Erasmus+ and other exchange programmes

Erasmus+ for Studies: it allows you to spend between 2 and 12 months at a partner University abroad. You can attend courses and take exams, prepare thesis work, and carry out internship work as long as it runs alongside a period of study. During the period abroad you will receive an Erasmus+ EU grant.

Open Arqus Mobility: Unipd is part of an Alliance of European Universities - [Arqus](#) - offering flexible mobility options among partner universities (Granada, Graz, Leipzig, Lyon, Maynooth, Minho, Vilnius and Wroclaw)

SEMP - Swiss European Mobility Programme: it allows student mobility to Switzerland.

Ulisse: it allows you to spend a study, thesis research or internship period abroad at partner Universities in Europe, Africa, Americas, Asia, Australia.

At the end of the period abroad, full academic recognition of the activities completed, as agreed in the Learning Agreement, is granted by ECTS or equivalent. The mobility period will also be recorded in your Diploma Supplement.



Local Development priority destinations

Mobility exchange destinations are regularly updated on Unipd [mobility agreements virtual atlas](#). You must select **LOCAL DEVELOPMENT – SU2446** as your degree programme from the Study field drop-down menu.

Agreements English

Preselection

Program: Erasmus (SMS) Study field: LOCAL DEVELOPMENT - SU2446

Country: Belgium

+ Show further fields

Keyword: Start search

Map

Statistics

- 2 Partner institutions
- 2 Agreements with partner institutions
- 2 partners in 1 continents
- 2 Partner in 1 countries
- 2 Agreements in 1 countries

Result

Show 10 entries

Institution	Continent	Country	City	Agreements
KATHOLIEKE UNIVERSITEIT LEUVEN	Europe	Belgium	Leuven	2
UNIVERSITE CATHOLIQUE DE LOUVAIN	Europe	Belgium	LOUVAIN LA NEUVE	2

In the platform, the total number of months indicated under Number for each agreement must be divided by the number of available places indicated under Total number.

It is necessary to note down all relevant information (e.g., Erasmus code, Academic Coordinator, ISCED/area of study) in order to select the correct destination on Uniweb.

Make sure to consult the webpages of the partner institutions, paying particular attention to academic course units on offer, language requirements and deadlines.

Please double check language and additional requirements for the specific course unit you would like to attend, as they are subject to change. Further linguistic restrictions may apply to specific course units.

Bilateral Agreement data	
Type of person	Student
Type of application	Outgoing
Name of program	Erasmus (SMS)
Erasmus code	B LEUVEN01
Subject code	0310 - Social and behavioural sciences, not further defined
Total number	2
First cycle/Bachelor/Undergraduate	0
Second cycle/Master/Postgraduate	2
Third cycle/PhD/Doctoral	0
Number	
In total: 12,00 Allocated: 12,00 Free: 0,00 Months	
Academic Coordinator's surname	RABBIOSI
Academic Coordinator's name	Chiara
Partner Campus/Faculty	Faculty of Science
Available places 2nd call	0
Ulisse agreements: University / Dept	

Information of Agreement	
Own information	
Additional requirements	Local Development (priority) -
Partner information	Students have to choose the courses in the field of Development Studies within the Faculty of Science. In addition to these courses, students are allowed to take maximum 2 courses at other faculties subject to approval of the other faculty.
Useful links	Course catalogue

Contact data of the partner institution	
Host country	Belgium
Partner institution	KATHOLIEKE UNIVERSITEIT LEUVEN
Current valid homepage	www.kuleuven.be

Read carefully
BEFORE APPLYING

Contact the professor in
charge of the agreement
BEFORE APPLYING

If you are a non-EU citizen, please consider that you are responsible for managing your migration documents (e.g. visa, residence permit). Make sure to review any restrictions that may apply to your situation.

Before applying for a destination, please contact the professor in charge of that specific agreement for information about scientific and learning aspects; this will help you determine, for example, if the exams you plan to include in your Learning Agreement are compatible with Local Development.

The Mobility Desk Unit holds regular webinars and meetings on mobility programmes. You will receive updates on their schedule.

For technical or administrative issues at any stage of your mobility, please refer only to:

Mobility Unit Desk – School of Humanities and Social Sciences and Cultural Heritage

Erasmus+ for Studies - Outgoing mobility

erasmus.scienzeumane@unipd.it

Projects and Mobility Office/ Mobility Unit – Central office

Erasmus+ for Studies grants, Uniweb application etc.

erasmus@unipd.it

Blended and Virtual mobility programmes

BIP Programmes: the Blended Intensive Programmes are international learning activities, combining online collaboration and a short physical mobility. Participation in the BIP will be noted in the Diploma Supplement as an extracurricular activity that does not count for the final GPA.

VIP - Virtual Exchange Programme: a virtual mobility programme organised by the Justus-Liebig-Universität Gießen, Germany:

Please note that Local Development students cannot register these credits in the Study plan, i.e. JLU course units cannot be recognised as equivalent to either Unipd course units or free credits/elective course units in your Study Plan. However, you may attend the course units and, if successfully completed, they will be noted in your Diploma Supplement as extracurricular activities that do not count toward the final GPA.



MAIN CONTACTS

DiSSGeA International Teaching Office

Local Development Secretariat Office

Teaching activities, tutoring, study plan etc.

master.localdevelopment@unipd.it

Prof. Chiara Rabbiosi

Head of the Master's degree programme in Local Development
chiara.rabbiosi@unipd.it

Prof. David Celetti

Local Development Internship Coordinator
david.celetti@unipd.it

Career Service

Internship administration

stage@unipd.it / alessandra.lighezzolo@unipd.it

ESU Padova

Accommodation and canteens

esu@esu.pd.it

Global Engagement Office – Admissions and Welcome Unit

Enrolment procedures for international students

international.admission@unipd.it

SAOS Office

Immigration procedures (e.g. residence permit)

saos@unipd.it

Student badge

cartaflash.studenti@unipd.it

Student Office (*Carriere Studenti*)

School of Human and Social Sciences and Cultural Heritage

Enrolment procedures for Italian students, certificates, student administration procedures

scienzeumane.studenti@unipd.it

Student Service Office (*Ufficio Servizi agli Studenti*)

Tuition fees, scholarships and various services

benefici.studenti@unipd.it

