



# Magnet

Contract Kitchen Solution

THE NO.1 KITCHEN CHOICE  
FOR UK HOMEMAKERS

nobia



## CONTENTS

### INTRODUCTION

- 4 Benefits
- 5 Resources
- 6 Solutions for every budget

### BAND 1

- 8 Strata Gloss Cream
- 9 Strata Gloss White
- 10 Strata Oak
- 11 Alpine Graphite
- 12 Meteor Blue
- 13 Meteor Grey
- 14 Meteor Light Grey

### BAND 2

- 15 Luna Cashmere
- 16 Luna Cream
- 17 Luna Matt Cream
- 18 Luna White
- 19 Luna Graphite
- 20 Luna Matt White
- 21 Nova Cashmere
- 22 Nova Cream
- 23 Nova Matt Cream
- 24 Nova White
- 25 Nova Matt White
- 26 Nova Matt Graphite
- 27 Tatton Cream
- 28 Tatton White
- 29 Tatton Grey

# OUR BEAUTIFUL KITCHENS MAKE BUSINESS SENSE.

With Magnet Contract Kitchen Solutions you get the best of both worlds - the perfect way to add property value without adding cost.

Install kitchens with inspiring style and craftsmanship, backed by the Magnet brand homemakers know and trust. Our kitchen showrooms and nationwide TV campaigns are familiar to everyone.

Plus, benefit from our superb service, comprehensive support and extensive experience. We're proud of our reputation for getting it right first time, and delivering to tight timescales and budgets.

With 62 irresistible kitchen designs in every style from cutting edge contemporary to timeless traditional – conveniently divided into six distinct price bands.

Every kitchen comes with a remarkable **20-year guarantee**, while our iD<sup>3</sup> cabinets come with a lifetime guarantee. No other supplier comes close to offering that level of reassurance.

**We'll give your business the competitive edge it needs.**

## BAND 3

- 30 Leighton Grey
- 31 Studio Grey
- 32 Studio White
- 33 Winchester Blue
- 34 Winchester Cream
- 35 Winchester Grey
- 36 Winchester Acacia
- 37 Winchester Midnight
- 38 Integra Meteor Grey
- 39 Integra Meteor Blue
- 40 Integra Meteor Light Grey
- 41 Integra Alpine Graphite

## BAND 4

- 42 Dunham Grey
- 43 Dunham Sky
- 44 Dunham White
- 45 Dunham Dove Grey
- 46 Dunham Midnight
- 47 Leyburn Oak
- 48 Planar Grey
- 49 Planar White
- 50 Shaker Cream
- 51 Fusion Blue
- 52 Fusion Champagne
- 53 Fusion White

## BAND 5

- 54 Integra Fusion Blue
- 55 Integra Fusion Champagne
- 56 Integra Fusion White
- 57 Integra Dunham White
- 58 Integra Dunham Midnight

## BAND 6

- 59 Newbury Grey
- 60 Newbury Midnight
- 61 Newbury White
- 62 Somerton Cream
- 63 Somerton Duck Egg
- 64 Somerton Fern
- 65 Somerton Sage

## COMPLETE TH

- 66 Appliances
- 72 Lighting
- 73 Accessories
- 74 Handles
- 76 Worktops
- 80 Taps
- 82 Sinks

## INFORMATION

- 84 Accessibility
- 86 Specifications
- 87 Sustainability

# YOU GET MORE THAN JUST KITCHENS WITH MAGNET CONTRACT KITCHEN SOLUTIONS

We understand how important kitchens are to your project. That's why when you choose Magnet, you get more than just kitchens, you get the service and expertise from the UK's leading kitchen specialist.

With over 200 stores nationwide, composed of Magnet showrooms and Magnet Trade warehouses, we've got the whole country covered.



## HERITAGE

**OVER 100 YEARS OF EXPERIENCE  
FROM A NAME YOU CAN TRUST**

Magnet is one of the UK's leading manufacturers of kitchen and joinery products to the consumer and trade markets



## PROJECT MANAGEMENT

**EXPERT PROJECT DESIGN  
MANAGERS WORK WITH YOU  
FROM START TO FINISH**

Our clients have one point of contact to bring clarity and efficiency throughout the process



## QUALITY

**KITCHENS MANUFACTURED  
IN THE UK TO LAST, WITH  
20 YEAR GUARANTEE**

All of our cabinets are certified from well managed forests, meaning they're sustainable, too. Many ranges carry the FIRA Gold Award certification



## DESIRABILITY

**A MAGNET KITCHEN ADDS VALUE TO  
YOUR PROPERTY, MAKING IT MORE  
ATTRACTIVE TO HOMEMAKERS**

Homemakers love our kitchens and trust the Magnet name for design flair and craftsmanship



## INSTALLATION

**OUR INSTALLERS UNDERSTAND  
NEW BUILD OR REFURBISHMENT  
PROJECTS AND ARE VETTED TO  
THE HIGHEST STANDARDS**

We also provide full Health & Safety risk assessments and method statements to ensure full compliance and safety for all



## PLANNING AND DESIGN

**HIGHLY SKILLED, PROFESSIONAL  
DESIGNERS EQUIPPED WITH  
THE LATEST TECHNOLOGY**

We use cutting-edge CAD software to create bespoke kitchens with maximum homemaker appeal

# nobia

## RESOURCES

**PART OF NOBIA, EUROPE'S  
BIGGEST KITCHEN COMPANY**

With some twenty brands across the continent, every week we manufacture more than 140,000 cabinets



## PRICE FLEXIBILITY

**UNIQUE TAILOR MADE KITCHENS  
TO SUIT EVERY BUDGET**

We have traditional and contemporary styles across six price bands and you always benefit from competitive contract pricing

# SOLUTIONS FOR EVERY BUDGET

**With a wide range of varied kitchen designs to choose from, you could be spoilt for choice. So we've made selection simpler by dividing our range into six distinct price bands.**

Band 1 is our entry level collection: simple, practical slab door designs, but still with that unmistakably solid Magnet craftsmanship – and our unique 20-year guarantee. At the luxury end of the spectrum, Band 6 is where you'll find our truly premium kitchens, ranging from high end contemporary designs to the traditional hand painted look – all with lots of extra thoughtful touches.





**PRICE BANDS**

**8 KITCHENS  
BAND 1**

**15 KITCHENS  
BAND 2**

**30 KITCHENS  
BAND 3**

**42 KITCHENS  
BAND 4**

**54 KITCHENS  
BAND 5**

**59 KITCHENS  
BAND 6**

BAND 1

## STRATA GLOSS CREAM

Add your own style to this practical range. Another take on this kitchen design, this time in a warmer cream colour. It takes the style from urban to something much more homely. Contrast this homely finish with dark laminate worktops and contemporary chrome handles to create a stylish but cosy kitchen.





BAND 1

## STRATA GLOSS WHITE

A practical and modern kitchen. Clean lines and a subtle gloss finish combine to make this kitchen a fine example of contemporary style. The simple elegance is complemented by slim tube handles, while the timber effect worktops finish the look.



## STRATA OAK

Timeless design with an Oak finish. This is a clean, unfussy style, given an extra bit of character with the Oak effect cabinets and drawers. The simplicity of the design means it's equally at home in contemporary or traditional settings. Team the warm oak with monochrome accessories and contemporary worktops for a real on-trend kitchen design.



BAND 1

## ALPINE GRAPHITE

The charm of textured wood grain effect doors creates a stunning kitchen with timeless elegance. Reflecting this in all its glory is a Deco Glaze bronze mirror splashback, while making an equally striking addition is a Max-Top Diamond White worktop that lights up the room as it draws the eye to the island unit.



## METEOR BLUE

This design is perfect for anyone who wants their kitchen to make a statement, without the worry that it'll go out of fashion in a few years. Traditionally a feminine colour, this pale blue matt slab door can be toughened up with the introduction of industrial-style accessories and artwork, or complemented with greys and pastel pinks. Finally, the hickory laminate worktops give this design a definitively modern feel.



BAND 1

## METEOR GREY

The Meteor Grey design combines two of the most fashionable trends in kitchens right now - a grey colour and a matt base. Pair with a Nebraska Blonde square edge worktop for a soft effect that gives the impression of more space.



## METEOR LIGHT GREY

A Meteor Light Grey design is perfect for the person who wants their kitchen to last, but also wants it to complement contemporary accessories. The Everest Black laminate worktop creates a timeless effect, whereas the matt finish nods to a modern-day trend for industrialism. The subway tiles take this industrial trend even further, and creates a focal point out of a splash back.



**BAND 2**

## **LUNA CASHMERE**

Retro meets forward-thinking in this bold member of the cashmere family. The curved doors in combination with the handleless cabinets make this kitchen's sleek units feel like they go on forever, whereas the hearty oak worktops bring this Luna line up back down to earth.



## LUNA CREAM

The smoothest of kitchens without a handle in sight. Urban chic arrives in the kitchen with Luna's high gloss cream finish and ultra-smooth 'look, no handles' styling.





**BAND 2**

## **LUNA MATT GREY**

This matt light grey kitchen is an oasis of calm with integrated door handles adding to the feeling of serenity by creating an uncluttered look. Caldeira compact laminate worktops contrast and complement beautifully with their dark organic finish.



## LUNA WHITE

Create a kitchen of contrasts. With no handles to interrupt the flowing lines, Luna's design is as pure and simple as the white gloss finish. Contrast with black tiles and worktops to introduce today's on-trend urban feel into any style of home.



BAND 2



## LUNA GRAPHITE

With handle-less doors, this graphite kitchen is functional yet edgy. The high gloss finish creates a smooth, modern finish. Here we've teamed the cabinets with a concrete Schock sink and matching tap for a great effect. The Earthy Marble worktop also gives a refreshing feel to the design.



BAND 2



## LUNA MATT WHITE

With a design unbroken by handles, this kitchen is for those who love a sleek and modern finish. Here it is shown with a Super Matt White Compact Laminate worktop to achieve a minimalistic look. Combine this kitchen with matt black accessories for a designer touch.



**BAND 2**

## **NOVA CASHMERE**

Our Cashmere kitchens are as luxurious as they sound. With a slab door and high-gloss finish, this kitchen stands firmly at the forefront of modern design. This kitchen isn't just about looks though - with its Max-Top worktops, sliding doors and built-in wine cooler, the Nova Cashmere's beauty lies as much in its functionality as in anything else.



## NOVA CREAM

Clean, uncluttered lines and creamy warmth. The neat, uncluttered styling perfectly complements the warmth of the cream gloss finish, and smart bar handles keep things contemporary to create a practical yet stylish kitchen.



**BAND 2**

## **NOVA MATT GREY**

For a contemporary finish, and practical style, the Nova Matt Grey is perfect in both form and function. Smart bar handles echo the uncluttered lines of the slab doors. Minerva white worktops complement the light grey surface tones. And with Alpine Graphite open shelving to give the space an artistic edge, this modern, cutting-edge kitchen will stand the test of both style and time.



## NOVA WHITE

A kitchen of classic simplicity. High gloss white has never looked so sharp. Contrast the purity of Nova's pristine white units and sleek bar handles with bold black worktops. Result: an affordable kitchen that's sure to remain a design classic.





BAND 2

## NOVA MATT SLATE

Inspired by Scandinavian design, Nova Matt Slate is simple yet striking. When paired with discrete edge handles, this kitchen exudes elegance. Adding a Light Oak Laminate worktop to this kitchen adds warmth and dimension.



BAND 2



## NOVA MATT WHITE

With a tactile matt finish, Nova Matt White is ultra-contemporary. The slab frontals give an elegant yet minimalistic look. Here it is shown with a Nebraska Blonde worktop, open shelving and contrasting matt black handles.



**BAND 2**

## **TATTON CREAM**

The Tatton range has the ability to appear as modern or as classic as you like, depending on your choice of accessories and appliances. Easy on the eye, it's our latest re-invention of the Shaker heritage, finished in mellow cream and boasting distinctive wider rails than stiles.



## TATTON WHITE

Tatton White is the latest addition to our Tatton family – a clean and crisp white which will look at home in either a modern or a traditional setting. Effortlessly versatile, this kitchen is a design classic.



**BAND 2**

## **TATTON GREY**

A soft grey colour scheme gives this Shaker kitchen elegance and charm without being too loud. Solid oak worktops and wooden accessories balance the minimal aesthetic, and living green plants provide focal points that breathe life and stand out.



## LEIGHTON GREY

A traditional Shaker with a contemporary twist. We've brought the traditional Shaker kitchen bang up to date, by giving it a sophisticated matt grey finish that works so well with the solid wood worktops. What you get is a best of both worlds look that combines the classic with the contemporary.



BAND 3

## STUDIO GREY

Another member of the Studio family, but this time bringing a pale grey gloss finish to accentuate the on-trend minimalism. Available with curved units if you want to softly round things off, or non-curved if you prefer it neatly linear. Nebraska Oak worktops and end panels add even more stand-out to a simple but striking design that you can accessorise with flair and freedom.



BAND 3

## STUDIO WHITE

Effortlessly cool, Studio White's simple but luxuriant high gloss finish creates immediate impact. Team with contrasting worktops and aluminium lip handles for a striking effect.





**BAND 3**

## **WINCHESTER BLUE**

The Winchester Blue with its green blue grained painted effect shaker doors is a minimalistic masterpiece without trying too hard. This uncluttered space uses the Minerva Carrara White worktop and stainless steel Belfast sink to stand out from the crowd and create a retro feel.



## WINCHESTER CREAM

Equal parts traditional and modern. This is a kitchen that displays traditional and modern influence in equal measure. The Shaker style doors in a distinctive matt cream wood grain effect are given a contemporary twist with chrome cup handles.



BAND 3

## WINCHESTER GREY

Combining traditional wood grain effect shaker doors with an industrial mid-grey palette, the Winchester Grey is the perfect intersection between classic and contemporary. The oak timber worktop nods to the spacious country kitchen, whereas the Belfast stainless steel sink represents a modern take on a traditional aesthetic that wouldn't be out of place in a city apartment.



## WINCHESTER ACACIA

The light timber effect of this Shaker style kitchen instantly creates a beautifully crisp and clean interior. One which is complemented further with the addition of a glossy Grey Marble laminate worktop and a walk in, pantry style, corner larder. The Winchester Acacia can also be combined with Winchester Cream, Blue or Grey to create a stunning effect.



BAND 3

## WINCHESTER MIDNIGHT

Introducing an on trend navy into our Winchester family with Winchester Midnight. Traditional wood grain effect shaker doors paired with the contemporary blue make this kitchen the perfect balance between classic and contemporary. This deep shade will add drama to any kitchen.



## INTEGRA METEOR GREY

Our matt grey version of the Integra Meteor range is perhaps the most versatile of them all. Shown here featuring a Juniper Corian worktop making it subtle, yet classy, and the perfect place to enjoy drinks with friends.



**BAND 3**

## **INTEGRA METEOR BLUE**

With Integra Meteor Blue, retro meets forward thinking. Its matt blue finish is seamless thanks to the handleless design, creating a bright and open space for the whole family. It may look modern, but it looks just as striking in a traditional setting too.



**BAND 3**

## **INTEGRA METEOR LIGHT GREY**

Featuring the Veined Slate laminate worktops, the Integra Meteor Light Grey oozes timeless elegance. As well as boasting a style which promises to stay in fashion, it provides the freedom to experiment – making it the perfect partner for those who like to add a bit of adventure to their cooking.

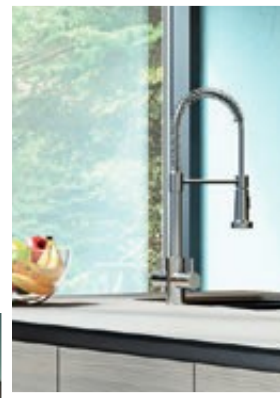




**BAND 3**

## **INTEGRA ALPINE GRAPHITE**

Perfect if you're looking for a fantastic family kitchen without sacrificing on designer appearance. The dark, handle-less wood grain slab doors give a feeling of warmth and an ultra-sleek finish. Complete the look with an Alaska compact laminate worktop and an Elica stainless steel seashell hood.



## DUNHAM GREY

The modern, mid-grey tone of this uncomplicated design gives the standard Shaker a new lease of life. Mixed with the drama of Nebraska Oak open shelves, this beautiful kitchen is the perfect combination of being easy to use, and easy on the eye.



**BAND 4**

## **DUNHAM SKY**

Whether set in a traditional country home, or a minimalist modern apartment, the light, airy blue of this kitchen makes it wonderfully flexible for any environment. The simple lines of the classic Shaker style make it the perfect background for any style of décor.



# DUNHAM WHITE

We've reworked the well-loved, pragmatic Shaker - with a twist. This modern kitchen comes in a clean, crisp white, making it uniquely versatile for either a contemporary or traditional setting.



BAND 4

## DUNHAM DOVE GREY

This soft grey, painted Shaker kitchen brings the promise of serenity to even the busiest of family kitchens, especially with the inclusion of natural, solid oak worktops and oak effect shelving. It's a style at home in both contemporary and traditional surroundings and one you can make your own by mixing the grey with other colours in the range.



## DUNHAM MIDNIGHT

This Shaker is striking in every detail; from its bold, matt-painted blue doors to its pure white Minerva Carrara worktop. The oak effect open shelving, plate rack and Belfast sink add a traditional edge but with a few simple tweaks, its style would suit the most contemporary home equally well. The clever addition of Dunham Dove grey wall units helps balance this kitchen out perfectly.



**BAND 4**

## **LEYBURN OAK**

With a light Oak finish and veneered centre panel with stepped detail, the Leyburn Oak provides a rustic space to cook and enjoy hearty meals with all the family. Here it is shown with a Minerva Copper Fleck worktop, with a matching stainless steel sink module and a breakfast bar, meaning it's as easy on the eye as it is flexible. Our new matt black handles add a lovely contrast to the pale Oak doors.



## PLANAR GREY

Simply stylish and very contemporary. This latest addition to our popular Planar family of kitchens continues the successful formula of minimalist design with maximum appeal. Integrated, almost invisible handles keep the lines smooth and clean, whilst the light grey gloss finish adds a stylish sheen.





**BAND 4**

## **PLANAR WHITE**

A really simple and clean style. The bright white finish of this design has a bit more stand-out. But of course, it's still got the minimalist design and the soft curves that make this style so popular.



## SHAKER CREAM

Beautiful design and real craftsmanship. America's Shaker community came up with this style in the 18th Century. To give it a bit of a modern makeover we've given you the option for soft curves. We think it's a kitchen that looks the part, in both traditional and contemporary homes.



BAND 4

## FUSION BLUE

A pale blue minimalist design. This modern kitchen has a high gloss pale blue finish. All the cabinet doors feature a contrasting colour trim that add a touch of style to the overall design. Accessories like chrome arrow shaped handles can help you create a retro feel too.



## FUSION CHAMPAGNE

A stunning fusion of chic metallic Champagne slab doors and striking duo tone silver edging makes this kitchen a showstopper. A true modern classic, this look is complemented by aluminium lip handles which give an effortlessly neat linear appearance that can't help but impress.



BAND 4

## FUSION WHITE

Beautiful design and real craftsmanship. A simple but stunning contemporary kitchen that demands attention, with its super high gloss finish and premium two-tone edging. The doors are bold, bright and very on trend, and their neutral tone and clean styling gives you the freedom to mix them with different textures and a versatile palette of colours.



# **INTEGRA FUSION BLUE**

Striking minimalism with added gloss. The fuss free handle-less signature of our Integra kitchens combines with the durable, high gloss metallic finish of Fusion Blue to bring you a minimalist look with plenty of impact. Crisp and contemporary, with a sleek linear design that gives your kitchen a fluid, flowing feel throughout.



**BAND 5**

## **INTEGRA FUSION CHAMPAGNE**

Integra Fusion Champagne elegantly creates the epitome of simplicity with its handle-free metallic Champagne slab doors and duo tone silver edging. Finished off with a Lava Rock Corian worktop.



## **INTEGRA FUSION WHITE**

A modern design and high gloss finish. There's plenty of clever design packed into this kitchen. And handle-free cabinets and drawers keep it looking slick and modern, with a totally smooth appearance. A subtle silver trim on the edges of cabinets adds contrast between doors and drawers.





**BAND 5**

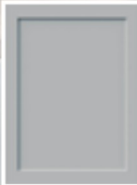


# INTEGRA DUNHAM WHITE

This kitchen is the perfect blend of modern and contemporary, with a shaker frontal and handle-less cabinet. We've teamed this kitchen with black trims and matt black accessories for a truly stylish kitchen. Add warmth to this kitchen with a White Oiled Timber worktop.



**ALSO AVAILABLE IN:**



DOVE GREY



SKY



GREY

**BAND 5**



# INTEGRA DUNHAM MIDNIGHT

With this kitchen, the beauty is in the detail. The contemporary shaker frontal combined with the handle-less cabinet is elegant and timeless. The Midnight colour is on trend and when mixed with brass accessories, this kitchen really stands out from the crowd. Dunham Midnight is shown here with Dunham Seagrass, which is from our new Magnet Create range.



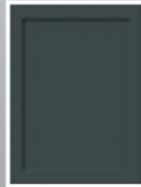
**ALSO AVAILABLE IN:**



DOVE GREY



SKY



GREY

**BAND 6**

## **NEWBURY GREY**

With its mid-grey matt finish, there's no denying the impact that a Newbury Grey kitchen will have. A sophisticated design that's also packed with ingenious space-saving storage features like a built-in spice rack and a full-length larder unit.



## NEWBURY MIDNIGHT

The streamlined, linear layout of this design instantly gives off a premium, on-trend feel. Complemented by the deep, sultry tones and relaxing duck egg blues of the kitchen units, this cutting-edge look is a truly chic and functional addition to any fashionable home.



**BAND 6**

## **NEWBURY WHITE**

Complemented by a refreshing modern twist, the subtle, off-white matt finish and over-painted doors of Newbury White combine to give a linear look that's stunning in its sheer simplicity.



# SOMERTON CREAM

This extremely versatile kitchen can satisfy even the most modern tastes. A sleek, sophisticated design utilising pilasters and chunky end panels to their maximum effect.



**BAND 6**

## **SOMERTON DUCK EGG**

This classic framed Shaker style kitchen is complemented by a painted timber effect, to give surfaces an authentic, traditional feel. Paired with the calming green-blue hue of the Duck Egg, this kitchen design is both practical, and delightfully relaxing to spend time in.



## SOMERTON FERN

A modern Shaker-style with a painted finish. The smart earthy green paintwork on the cabinets make this kitchen a good fit for both modern and traditional homes. We like the way you can still see the grain of the wood showing through the finish. And granite worktops with stainless steel accessories work well together if you want the cabinets to really stand out.





**BAND 6**

## **SOMERTON SAGE**

A modern take on a cottage kitchen. This alternative to cream combines a light shade of green with a soft grey undertone. It creates a modern looking kitchen that works perfectly with a solid wood worktop. You can easily personalise the look, so it's great in traditional or contemporary homes.



# APPLIANCES

Ovens and hobs, extractors and hoods, fridges, freezers and larders, washers, dryers and dishwashers. Our range of top brand appliances will make your chosen kitchen even more irresistible to homemakers. Options vary from traditional range cookers to the latest ceramic and induction hobs, and integrated wine coolers. Just ask the Magnet Contract Kitchen Solutions team and we'll make it happen.



**AEG DKB5960HM 90CM**  
Chimney Hood, Touch Button controls, H2H



**AEG BEK351010M**  
Single Multifunction oven with easy clean enamel interior

**AEG HG65435ISM**  
60cm Gas Hob



## SINGLE OVENS



**AEG**

**AEG BEK351010M  
Single Multifunction Oven**

9 Functions	Steam bake function
71 Litre capacity	16 Amp
Easy clean enamel	A energy class



**beko**

**Beko BNIC22100X  
Single Static Oven**

4 Functions	Fast preheat
Easy clean enamel surface	71 Litre capacity
A-20% energy class	



**Electrolux**

**Electrolux EOB3400EAX  
Multifunction Oven with  
Easy Clean Enamel Interior**

8 Functions	0.79 kW/h Fan, 16 amp
Energy Rating A-20%	Fully programmable timer
74l Capacity	Soft close doors



**beko**

**Beko BNIF22300XD  
Single Fan Oven**

5 Functions	Fast preheat
Easy clean enamel interior	66 Litre capacity
A-20% energy class	



**ZANUSSI**

**Zanussi ZOB35471XK  
Multifunction Oven**

3 Functions	13 Amp
B energy class	Programmable timer
70l Capacity	Fan defrosting



**beko**

**Beko BNIE2300XD  
Multifunction Single Oven**

6 Functions	Fully programmable timer
Simple steam cleaning	71 Litre capacity
A-20% energy class	

## DOUBLE OVENS



**AEG**

**AEG DUK43110M  
Built-Under Multifunction Oven  
with Catalytic Liners**

Functions: Main 2, Top 5	Fully programmable timer
Main oven - 2 function, 46 litre capacity	Top oven - 5 function, 40 litre capacity
30 Amp	



**AEG**

**AEG DEK431010M  
Multifunction Double Oven**

Built-in	Fan controlled defrosting
Main oven - 2 function, 68 litre capacity	Top oven - 5 function, 40 litre capacity
Programmable timer	30 Amp
Energy rating A	



**ZANUSSI**

**Zanussi ZOF35661XK  
Built Under Double Oven**

Functions: Main 2, Top 5	0.78 kW/h Fan, 30 amp
Energy Rating A	Fully programmable timer
Capacity: Main 46l, Top 40l	Fan controlled defrosting



**beko**

**Beko BNDF22300XD  
Double Oven**

Built-in	Main oven - fan assisted
Simple steam cleaning	Second oven - conventional
Multi functioning top and bottom oven	Touch Control LED timer
Energy rating class A/A-20%	



**Electrolux**

**ELECTROLUX EOU5420AAX  
Built-Under Multifunction Oven  
with Catalytic Liners**

Functions: Main 2, Top 5	0.79 kW/h Fan, 30 amp
Energy Rating A	Fully programmable timer
Capacity: Main 46l, Top 40l	Fan controlled defrosting



**beko**

**Beko BNTE22300XD  
Double Oven**

Built-under	Main oven - fan assisted
Minute minder	Second oven - conventional
Multi functioning top and bottom oven	Touch Control LED timer
Energy rating class A/A-20%	

# HOODS



**elica**

**Elica Tribe  
90cm Chimney Hood**

3 Speed	580m <sup>3</sup> /hr
2 x 20W LED lights	Max 63 dba
F00645 Charcoal filter	Touch control
Energy rating	B



**elica**

**Elica Reef  
90cm Island Hood**

3 Speed	581m <sup>3</sup> /hr
2 x 20W LED lights	Max 68 dba
Filter Not Included	Touch control
Energy rating	B



**elica**

**Elica Joy  
90cm Island Hood**

3 Speed	581m <sup>3</sup> /hr
LED	Max 69 dba
Square	Touch control
Energy rating	C



**AEG**

**AEG Hood DKB5960HM  
90cm Chimney Hood**

4 Speed	779m <sup>3</sup> /hr
3 x 2.5W LED lights	Max 54 dba
Charcoal filters included	Touch control
Energy rating	A



**elica**

**Elica  
60cm Chimney Hood**

3 Speed	390m <sup>3</sup> /hr
2 x 28W LED lights	Max 62 dba
F00315 Charcoal filter	Slider control
Energy rating	E



**elica**

**Elica Reef  
90cm Chimney Hood**

3 Speed	580m <sup>3</sup> /hr
2 x 20W LED lights	Max 63 dba
F00645 Charcoal filter	Touch control
Energy rating	C



**ZANUSSI**

**Zanussi ZHC9235X  
90cm Chimney Hood**

3 Speed	515m <sup>3</sup> /hr
2 x 20W LED lights	Max 71 dba
Type 15 C/coal filter (optional)	Electronic control
Energy rating	D



**AEG**

**AEG Hood DKB5660HM  
60cm Chimney Hood**

4 Speed	779m <sup>3</sup> /hr
2 x 2.5W LED lights	Max 54 dba
Charcoal filters included	Touch control
Energy rating	A

# HOBS



**AEG**  
AEG HG755450SY  
75cm Gas Hob

1 Wok, 1 rapid, 2 semi rapid, 1 simmer	
Flame safety device	Cast iron pan supports
75cm wide hob	LPG Kit Included



**Electrolux**  
Electrolux KGS6436X  
60cm Gas Hob

4 burners: 1 Wok, 1 Auxiliary, 2 Semi rapid	
Flame safety device	Cast iron pan kit
LPG kit included	



**AEG**  
AEG HK624010FB  
60cm Ceramic Hob

4 cooking zones	Touch control
Residual Heat Indicator	30 amp
Child lock	



**AEG**  
AEG HK654200FB  
60cm Induction Hob

4 induction zones	Child lock
15 power levels	30 amp
Stop & Go function	Timer and power boost



**AEG**  
AEG HG65435ISM  
60cm Gas Hob

Automatic integrated ignition	
Steel capped control knobs	Cast iron supports
Rotatory controls	Safety gas cut off



**AEG**  
AEG HG654550SY  
60cm Gas Hob

4 burners: 1 Wok, 2 Semi rapid, 1 Simmer	
Flame safety device	Cast iron pan supports
LPG kit included	



**Electrolux**  
Electrolux EHF6241FOK  
60cm Ceramic Hob

4 cooking zones	Child lock
Residual Heat Indicator	30 amp/Touch Control



**Electrolux**  
Electrolux LIT604  
60cm Induction Hob

4 induction zones	Child lock
15 power levels	30 amp
Stop & Go function	Timer and power boost

## HOBS



**beko**

**Beko HNZG64122SX  
60cm Gas Hob**

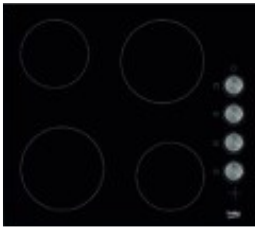
4 Gas burners, 3 sizes	Enamelled pan supports
Knob ignition	LPG convertible
High precision controls	Flame failure device



**beko**

**Beko HIZE64103X  
Solid Plate Hob**

60cm Wide hob	7kW/h
4 Cooking zones	



**beko**

**Beko HNCC64105  
60cm Ceramic Hob**

60cm Wide hob	Residual heat indicators
4 Radiant cooking zones	Easy to clean surface
Side rotary controls	



**beko**

**Beko HNI64401AT  
Induction Hob**

60cm Wide hob	9 Power levels
4 Induction cooking zones	Timer
Touch controls	Boost mode (all 4 zones)
Child lock	

## MICROWAVE



**beko**

**Beko MGB25332BG  
Microwave**

8 Functions	8 Power Levels
25 litres capacity	H:448mm Aperture

## FRIDGE/FREEZER



**AEG**

**AEG SCE8181VNS 50:50  
Fridge Freezer**

88 Litre freezer	Reversible door
158 Litre fridge	Energy rating class
Automatic defrosting	

## SPLASHBACK



**cape**

**60cm Stainless Steel Splashback**



**Electrolux**

**Elec ENN2853COV 70:30  
Fridge Freezer**

Energy Rating A+	200l fridge capacity
Touch control	4 fridge shelves
297 kW/year	Auto defrost
Reversible door	63l freezer capacity
3 freezer shelves/drawers	



**Beko BCB7030F 7030 Fridge Freezer**

78 Litre freezer	Reversible doors
193 Litre fridge	Energy rating class A+
Frost Free	
Requires 1 x 22mm false base – 44333806	



**Beko BCB5050F 5050 Fridge Freezer**

102 Litre freezer	Reversible doors
163 Litre fridge	Energy rating class A+
Automatic defrosting	
Requires 1 x 22mm false base – 44333806	



**Beko BL21 Larder Fridge**

Built-under fridge	Auto defrost
130 Litres	Glass shelves
Energy rating class A+	



**Beko BR11 Fridge**

Built-under fridge & ice box	Glass shelves
125 Litre fridge	Reversible doors
Energy rating class A+	



**Beko BZ31 Freezer**

Built-under Freezer	183 kWh/year
96 Litres	4 Star freezer rating
Energy rating class A+	

## DISHWASHERS



**AEG FSK31600Z 60cm Dishwasher**

13 Place settings	3 programmes
11 Litres	Height adjustable basket
49 dB(A)	Energy rating class A



**Beko DIN15310 Integrated Dishwasher**

12 place settings	12 Litres
5 programmes	49 dB(A)



**Beko DI515012 Integrated Slimline Dishwasher**

10 place settings	13 Litres
5 programmes	Energy rating class A+

## WASHERS



**Beko WIY84540F Washing Machine**

1400rpm spin	16 programmes
7kg washing	Energy rating class A



**Beko WIY72545 Washing Machine**

1200rpm spin	16 programmes
6.5kg washing	Energy rating class A



**Beko WDIY854310F Washer Dryer**

1400rpm spin	16 programmes
7kg washing/5kg drying	9400L Water consumption
Energy rating A	

# LIGHTS & ACCESSORIES

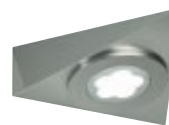
Just imagine the effect when a potential buyer opens a cupboard in your showhome... and reveals a nifty pull-out wire basket... swing-out shelving... a 3-part eco-bin. Or flicks a switch and activates stunning hidden lighting. Imagination-catching moments like these can clinch a deal or turn mild interest into something much more passionate.



## LIGHTING



Ultra-Thin Led Light Panel



Delta Spot Light



Flexible LED Strip



Square LED Spot Light



Small Round Spot Light



Recessed Spot Light



T-Bar Over Cabinet Light



Slimline LED Spot Light



Multiwhite Orbit Spot Light



# ACCESSORIES



**Worktop Plus**



**Table Plus**



**Door Storage System**



**Silver Cutlery Insert**



**Cabinet Plus**



**Mirror Plinth**



**Plinth Sound Unit**



**Pop Up Socket**



**Two Tier Sink Pull Out**



**Full Extension Wire Basket**



**Three-Section Swing Eco Bin**



**Base Grey Carousel**



**Pull And Swing Corner Unit**



**Twin Corner**



**150 Pull Out**



**Internal Drawer Unit**



**Standard Cutlery Insert**



**Pull and Swing Corner Unit**



**Bachmann Due Power Socket**



**USB Charging Tray**

# HANDLES

With our wide range of decorative knobs and handles we can help you put the finishing touches to your beautiful kitchen, transforming it into a truly irresistible package.



## GROUP A



SS C Handle 128cc



Small Bow Handle 160cc



Tube D-Handle 128cc



Standard Bar Handle 128cc

## GROUP B



Brass Knob



Standard Bar Handle 248cc



Aluminium Lip Handle 296mm



Large Bow Handle 320cc



3 Piece Stainless Steel Bar 128cc



Copper Knob

## GROUP C



Brass Handle



Contemporary Angled 160cc



Aluminium Lip Handle 396



Standard Bar Handle



Square Steel Handle



3 Piece Stainless Steel Bar 192cc



Standard Bar Handle 448cc



Copper Handle

## GROUP D



Standard Bar Handle 548cc



Contemporary Curved D Handle 160cc



Haptic Handle



Square Steel Handle 224cc



Black Bell Knob



Blackened Copper Knob



Small Chrome Arrow Handle 160cc



Aluminium Lip Handle 596mm



Standard Bar Handle 848cc



Aluminium Lip Handle 496mm



Antique Brown Bell Knob

## GROUP E



Contemporary Curved D Handle 224cc



Large Chrome Arrow Handle 256cc



Aluminium Lip Handle 796mm



Curved Chrome Handle 224cc



Antique Brass Handle



Antique Brass Cup



Antique Brass Knob



Inox Fold D Handle



Traditional Brushed Steel Handle



Traditional Brushed Steel Handle



Traditional Brushed Steel Handle



Matt Black Handle



Matt Black Cup Handle



Matt Black Knob



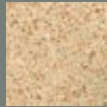
Blackened Copper Handle



Antique Brown Fold D Handle

# WORKTOPS

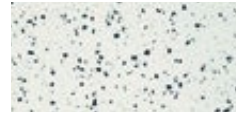
Just a taster of the wealth of worktops available with Magnet kitchens. There's everything from high definition laminates and contemporary square edged and matt finished surfaces to solid timber. We also offer the sheer luxury of authentic 30mm thick granite and quartz worktops available in a wide choice of colours. Both are hand polished to a high gloss finish and feature superb attention to detail, such as smoothed undersides of overhanging surfaces. To prevent breakage, our granite worktops come complete with reinforcement bars for sink and hob cut-outs (quartz needs no reinforcement) and we offer 5-day turnaround from template to fitting on both quartz and granite.



## MINERVA WORKTOPS

A practical and solid work surface manufactured using state-of-the-art technology to deliver a luxurious appearance with robust performance day in, day out.

- No specialist installation required
- Non-porous unlike granite, so resists most household chemicals and minor scratches are easily repaired
- Comes with 10-year guarantee



**Ice Blue**



**Peak Stone**



**Ice Crystal**



**Carrara White**



**Grey Crystal**



**Sylmar White**



**Amazonia Brown**



**Copper Fleck**



**Sparkling White**

## MAXTOP WORKTOPS

Maxtop Worktops have the look of Quartz, with a lightweight and durable watertight surface. It does not require any specialist fitting and is available in 3 colours.

- All the desirability of quartz for less cost



**Black Sparkle**



**Warm Grey**



**Diamond White Sparkle**

## SOLID TIMBER

Solid timber worktops work brilliantly with both modern and traditional designs. Their natural beauty and authentic textures bring warmth and charm to your home, and they can be cut to any shape you require.

- All solid wood worktops come in either 28mm or 40mm thickness
- Supplied with protective sealing oil and simple care instructions to ensure long use and lasting beauty
- Durable and resistant to wear and discolouration



**Solid White Oiled Oak**



**Solid Oak**



**Solid Walnut**

## COMPACT LAMINATES

The next generation in worktop design – ultra sleek, versatile and high performing. These cutting-edge compact worktops provide complete flexibility in design and are the new, unique alternative to natural stone.

- Highly contemporary at just 12.5mm thin
- 100% waterproof stylish black core
- Double-sided laminate decorative surface gives the ability to achieve breakfast bar waterfall sides and opening shelving
- Superior performance characteristics against heat, wear and impact
- Can be curved and installed on site with no specialist tooling



**Super Matt White**



**Caldeira**



**Lave**

## LAMINATE WORKTOPS

Laminates are the mainstay of many kitchens in the UK. Available in a range of finishes, styles and to suit any budget. These worktops accurately replicate natural worktops but also give consistency of finish so there will be no colour match issues.

- Available in a variety of colour options to suit every taste
- A choice of 'natural' finishes, including granite, marble and timber
- Water and stain resistant

## LIGHT



**White**



**White Marble**



**Sandstone**



**White Glass**

## GREY



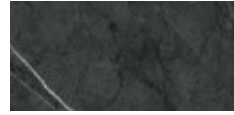
**Grey Granite**



**Concrete**



**Grey Terrazzo**



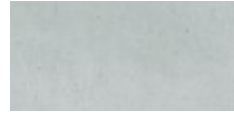
**Veined Slate**



**Super Matt Grey**



**Grey Marble**



**Argent**



**Warm Grey Marble**



**Empire Slate**

## DARK



**Black Granite**



**Midnight Granite**



**Strass Noir**



**Black Marble**



**Andorra**



**Ceramic Anthracite**



**Everest Black**



**Industrial Metallic**

## WOOD



**Colmar Oak**



**Light Oak**



**Mountain Lodge**



**Walnut**



**Nebraska Blonde**



**Capitol Pine**



**Dark Butchers Block**



**Nebraska Oak**



**Hickory**



**Meteor Dark Oak**



**Alpine Graphite**

**ADD A CONTEMPORARY TWIST**  
to your kitchen with stylish splash-  
backs and upstands available in a  
wide range of laminate finishes. Ex-  
tremely practical and easy to clean -  
ideal for use behind sinks and hobs.

# TAPS

Our array of taps, ranging from truly traditional styles to modern designs that wouldn't look out of place in a museum of modern art.



## TAPS



**Archer Chrome**



**Montoro**



**Neptune Chrome\***



**Porritt Pull-Out Spray**



**Ilma Spring**



**Roma Single Lever**



**Piave**



**Norrie†**



**Eiger**

†Also available in matt black.





Olympus



Copper Ridley



Nero Coniston<sup>††</sup>



Swan



Typhon



Nero Pull Out Spray



Marlin Pull Out Spray



Evios



Axiom



Leira



Caple Karns



Brass Adige<sup>^</sup>



Guarda



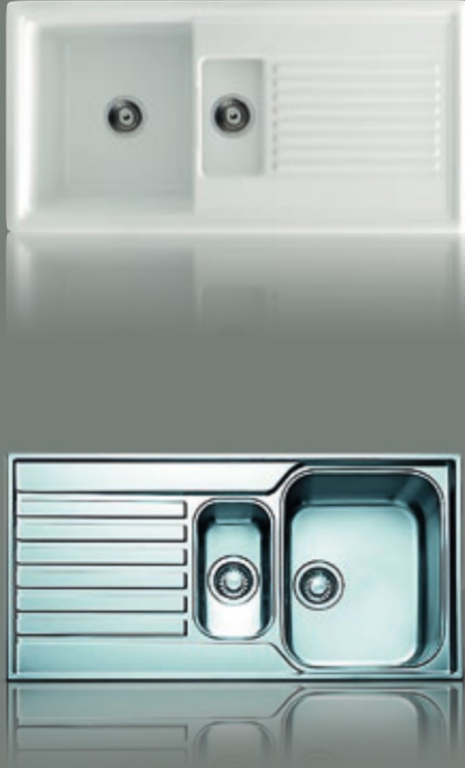
Zurich

<sup>^</sup> Also available in copper.

<sup>††</sup> Also available in black.

# SINKS

From funky stainless steel to elegant ceramics and cool composites, our sinks are eye-catchingly stylish as well as superbly functional.



## STAINLESS STEEL



**Sparta 100x50 1.0B Inset**



**Sparta 79x50 1.0B Inset**



**Athena 1.5B Inset**



**Franke Ascona ASX6II 1.0B**



**Athena 1.0B Inset**



**Franke Laser LSX6II REV 1.0B**



**Franke Ascona ASX651 1.5B**



**Franke Laser LSX651 REV 1.5B**

■ Also available in Gun Metal.

## CERAMIC



Caple 045 1B



Pyramis CR Round Bowl



Belfast



Franke Modena 1.0B Inset

## COMPOSITE



Schock Viola 1.0B Onyx



Schock Primus 1.0BD



Schock Viola D150 1.5



Schock Quadro 1.5B

A HUGE CHOICE FROM THE  
WORLD'S LEADING BRANDS

**FRANKE**

**caple**

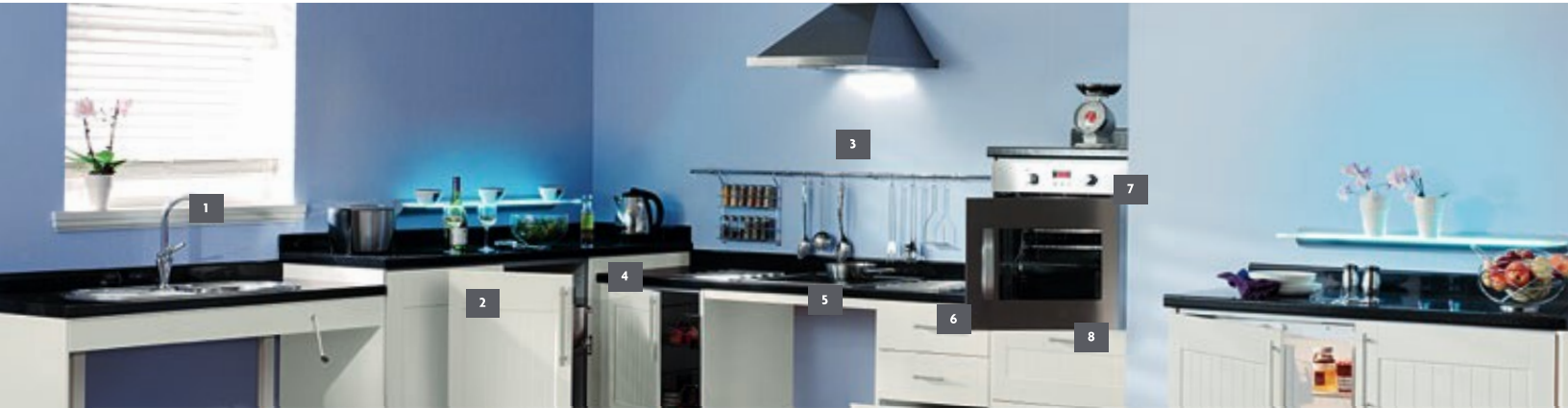
**IN  
SINK  
ERATOR**

**SCHOCK**  
**BRIITA**

# ACCESSIBILITY KITCHENS

We specialise in creating truly practical facilities for wheelchair users, the elderly and people with limited mobility, having partnered with many local authorities, housing associations and residential social landlords.

We work closely with experts, specifiers, installers and users to create flexible, cost-effective, attractive solutions. Kitchen cabinets are available in a range of sizes with units secured to the worktop and wall for strength and easy wheelchair access. The resulting kitchens provide optimum levels of accessibility, usability and are also packed with thoughtful touches. Accessibility cabinet options are available in all of our kitchen ranges.



- 1** LOWERED SINK AREA using rise and fall worktop system and flexible sink waste kit with shallow bowl sink and lever mixer tap.
- 2** MAGIC CORNER UNIT
- 3** MIDWAY STORAGE
- 4** ACCESSIBILITY UNDERMOUNT CUPBOARD UNIT 500mm wide. Shown with optional full extension wire baskets fitted, to allow easier access to contents. Undermount cupboard unit is also available in 300mm, 400mm and 600mm widths, with full extension baskets available for each width.

- 5** LOWERED HOB AREA featuring induction hob with front controls (no naked flames to reach over).
- 6** ACCESSIBILITY UNDERMOUNT 3-DRAWER UNIT 500mm wide, 600mm wide 2-drawer option also available.
- 7** SIDE OPENING OVEN with left and right hinged options available to suit the kitchen layout.
- 8** MID-HEIGHT SINGLE OVEN HOUSING 600mm wide with 2 drawers. This unit ensures that the oven is at the ideal height for wheelchair users.

# ACCESSIBILITY KITCHEN ACCESSORIES

Every detail counts when accessibility is the prime consideration.

The Magnet range includes a variety of specially adapted accessories and appliances that make it possible to create kitchens tailored to varying needs and levels of disability, whether wheelchair access is required, or the user simply has limited mobility.



Two tier sink pull out



Pull & swing corner unit



Full extension wire baskets



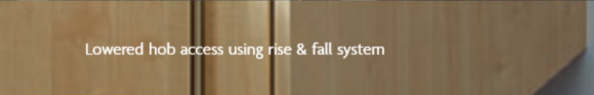
Zanussi single oven



Pull down wire shelves



Lowered sink unit or manual rise & fall system



Lowered hob access using rise & fall system

# QUALITY COMES AS STANDARD

At Magnet we never compromise on quality. Our craftsmen use only high grade materials that meet rigorous standards - plus, all our wall units are 330mm deep, a feature that's unique to us!

Our attention to detail is also second to none, and we use durable components designed to last. Regular and smooth close cabinets carry a 20 year guarantee while our iD<sup>3</sup> cabinets come with a lifetime guarantee. This means your homemakers can relax in their new kitchen with complete peace of mind. All of our units are made from timber from reliably sourced woods.

Regular White



Smooth Close - White



Smooth Close - Oak



FEATURES	REGULAR WHITE	SMOOTH CLOSE - WHITE	SMOOTH CLOSE - OAK
1 Cabinets are manufactured using a durable 18mm or 16mm MFC. Floor units feature rigid front and back rails and double units have deep muntins for added strength	•	•	•
2 Sturdy clip-on hinges make it easy to remove and replace doors for perfect alignment	•	•	•
3 Smooth close mechanism integrated in hinges			
4 Smooth close drawer system incorporated		•	•
5 All our drawers are metal sided as standard with smooth roller runners. Drawer depth is 500mm giving ample storage space	•	•	•
6 Smooth close tandembox which reduces slamming and trapped fingers		•	•
7 The majority of our base units have height-adjustable legs to cope with uneven floors	•	•	•
8 Our regular floor units have backboards to facilitate pipe work and plumbing. They also have open tops for simple installation of worktops, sinks and hobs	•	•	•
9 All units are supplied with shelves that are adjustable to three positions with retaining shelf supports*	•	•	•
10 Tough ABS front edge on both the cabinet and shelves which protects and maintains the aesthetic appearance of your cabinet for years to come	•	•	•
11 Silver ABS edging	•	•	
12 Oak ABS edging			•
13 Grey ABS edging			
14 Clip on plinths for a neat finishing touch	•	•	•
15 6mm back panel			
16 Rechargeable sensor lights			

\*Glazed units are supplied with glass shelves. \* Ready to assemble cabinets are supplied with a 15-year guarantee.

# SUSTAINABLE AS WELL AS DESIRABLE

Homemakers want sustainable homes these days – and ever-stricter regulations demand them.

At Magnet we fully recognise our responsibility to minimise the impact of our business on the planet and help our homemakers and partners be environmentally considerate. We therefore manage our operations in accordance with the international ISO 14001 standard, complying fully with all relevant environmental legislation.



- All our cabinets are **FSC® certified**
- Member of WWF 95+ GROUP
- ISO 14001:2015 Environmental Management System (EMS 589787)
- All cabinets supplied with full chain of custody

# RIGHT FIRST TIME

**That's our motto at Magnet Contract Kitchen Solutions for every aspect of every project – including installation.**

Our experience in the contracts market, where it is essential to create as little disruption as possible, means we are accustomed to working quickly as well as to the highest standards.

Quality control is an integral part of the service we provide. A dedicated, local team will be appointed to supervise the project and liaise with you at every stage.

We want you to be proud of installing kitchens from Magnet Contract Kitchen Solutions. We have a reputation for quality – and we're determined to keep it that way.

Read our accompanying Service Promise brochure to find out why we're the fastest growing B2B kitchen experts in the industry. Hear from other clients across multiple sectors, including Social Housing, Private Developers and Retail and Leisure contractors who have chosen Magnet CKS to get the project right first time, every time.



# CONTACT INFORMATION

For all tenders and quotations please contact us:  
Tel: **0113 247 0866** or email: **CKSenquiries@magnet.co.uk**

For more information, visit our website:  
**magnetCKS.co.uk**

## Magnet Contract Kitchen Solutions

221 North Street  
Leeds  
LS7 2AA



# Magnet

Contract Kitchen Solutions

