



UDE / Uni Duisburg-Essen / Universität Duisburg-Essen / eventfotograf.in

# UNIVERSITÄT DUISBURG- ESSEN

## **INCOMING STUDENT COORDINATOR**

Lilian Henschke

[exchange.incoming@uni-due.de](mailto:exchange.incoming@uni-due.de)

Tel. +49 203 379 1337

Geibelstr. 41

SG 121

47057 Duisburg

Germany

## **INSTITUTIONAL ERASMUS COORDINATOR**

Aldona Wesner

[erasmus@uni-due.de](mailto:erasmus@uni-due.de)

Tel. +49 201 183 6717

Berliner Platz 6-8

WST-B.06.07

45127 Essen

Germany

## **INTERNATIONAL OFFICE**

<https://www.uni-due.de/international>

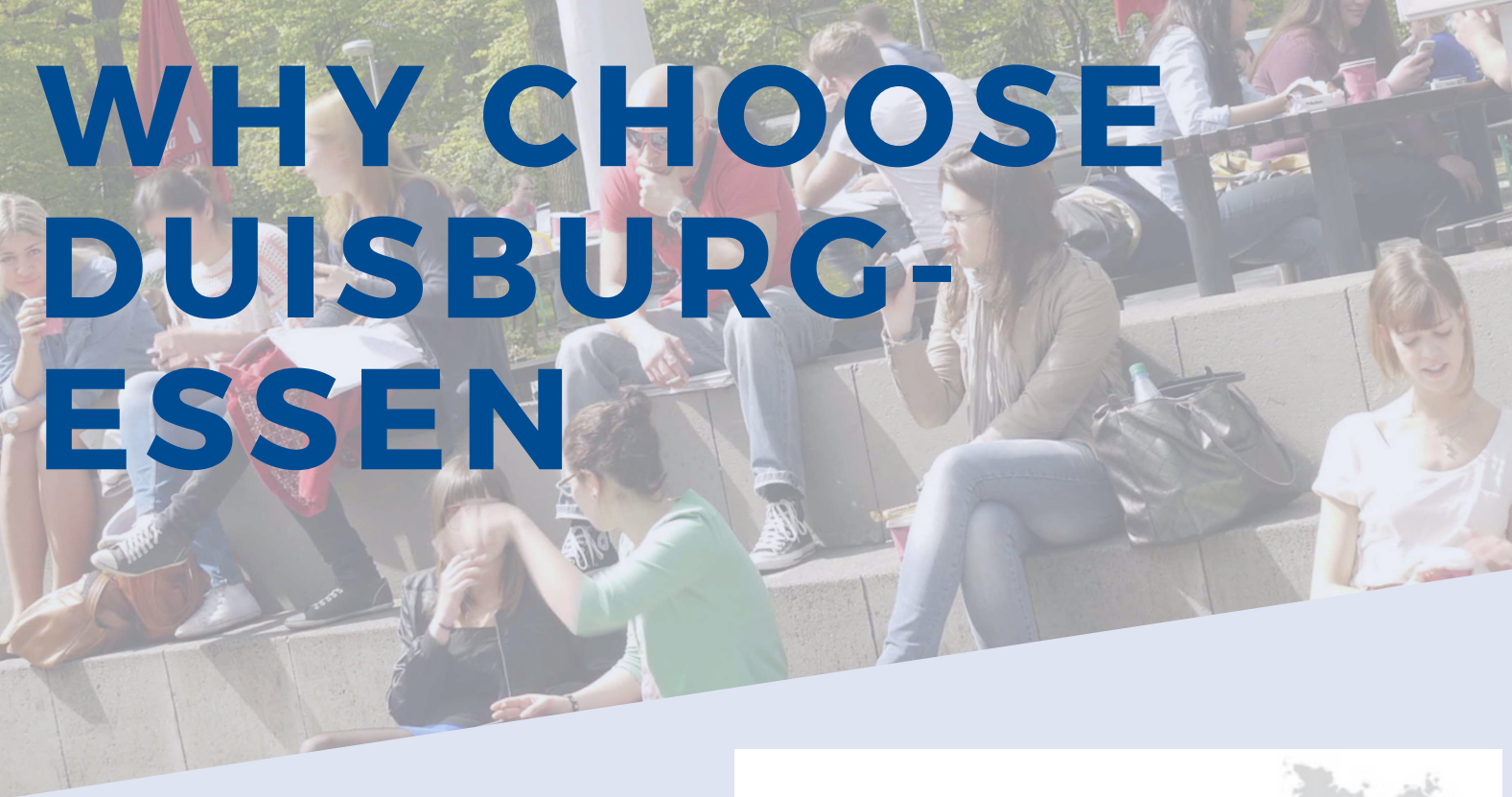
**UNIVERSITÄT  
DUISBURG  
ESSEN**

Erasmus Code: D ESSEN04

*Open-Minded*



# WHY CHOOSE DUISBURG- ESSEN



The University of Duisburg-Essen (UDE) is one of the largest universities in Germany with over 40,000 students spread over both campuses.

The cities of Duisburg and Essen are at the heart of the Ruhr Area in the northwest of Germany, close to the border with the Netherlands. This region was shaped by the mining industry and has been a melting pot for centuries, which is why the people have a reputation for being very open and tolerant.

Many of the old industrial heritage sites have now been turned into parks or museums and as well as the vibrant cities, there are also many green spaces, recreational areas and parks to unwind in. The Ruhr Valley is full of beautiful locations to visit on a bike ride or a countryside walk.

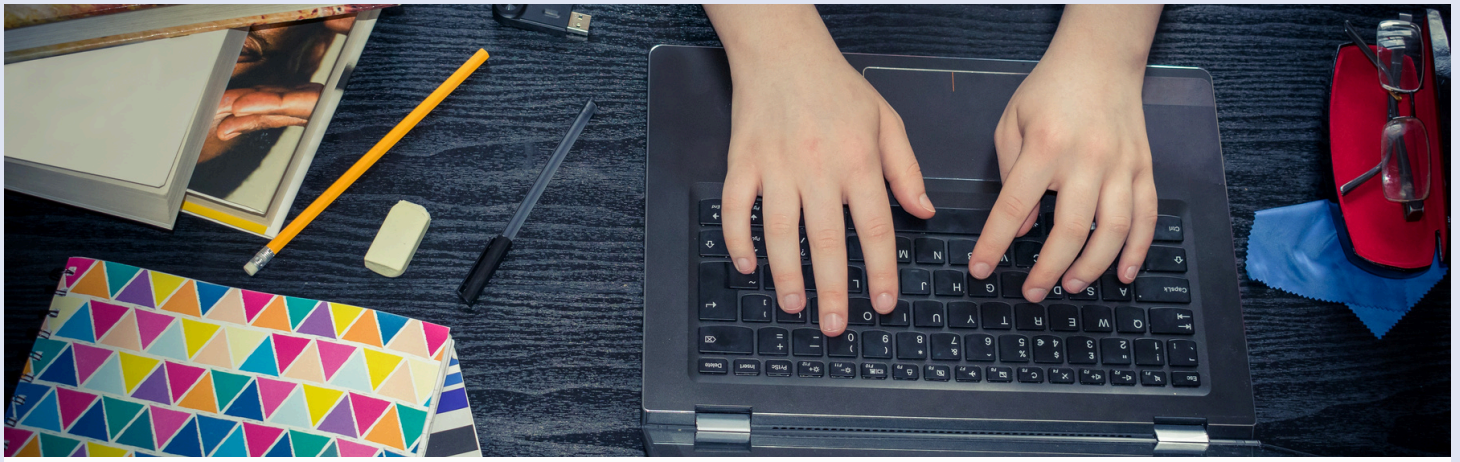
There is no shortage of things to do in your free time... soak up the culture in one of more than 200 museums, theatres and art exhibitions or meet up with friends in the many shops, bars and restaurants in both cities. With excellent transport links, Dusseldorf and Cologne are only a train ride away... or take a day trip to Amsterdam, Paris or Brussels!



**YOUNG UNIVERSITY  
RANKINGS: IN TOP 15**

**WORLD UNIVERSITY  
RANKINGS: IN TOP 200**





# PLAN YOUR STAY

## ACADEMIC PERIOD

Lecture periods for exchange students

**Winter semester 2024/25:**

07th October - 31st January

**Summer semester 2025:**

07th April - 18th July

Orientation events are sometimes planned before the lecture period and examinations usually take place within three weeks after the end of the lecture period but this varies depending on the faculty so check with your Faculty Coordinator at the UDE before making travel plans.

## PARTNER UNIVERSITIES AND INTERNATIONAL COOPERATIONS

Nominated students from partner universities can follow courses from within the partner faculty as well as take supplementary subjects offered by our "Institut für wissenschaftliche Schlüsselkompetenzen".

After you have been nominated by your home university you will be allocated a Faculty Coordinator from the UDE who will guide you with course selection.

## LIVING COSTS

There are no tuition fees at the UDE but **all** students have to pay a social contribution of around €305 each semester in order to enrol. This payment includes a "semester ticket" for free use of all local public transport.

According to the DAAD, a German student has average expenses of €842/month including rent, travel expenses, food, clothing, learning materials, health insurance, telephone, Internet, radio and TV licence fees, and recreational activities.

If you need a [visa](#) you will be expected to demonstrate [funds of €992/month](#).

## HEALTH INSURANCE

It is compulsory to have proof of a valid health insurance in order to enrol as a student at the UDE.

Further information can be found [here](#) and we will provide contact details of local health insurance providers after admission.



# PLAN YOUR STAY

(CONTINUED)

---

## GERMAN LANGUAGE

---

German is the main language of instruction at the UDE and a good command is usually required of exchange students. The exact requirement will vary depending on the faculty (some faculties also offer courses taught in English). Please consult your Faculty Coordinator for further information.

If you are interested in improving your German skills, the Institut für wissenschaftliche Schlüsselkompetenzen (IWiS) offers free language classes to exchange students.

The International Office can also match you with a “language tandem partner”, giving you the opportunity to improve your language skills by interacting with native speakers and the Studierendenwerk holds regular language cafe sessions to practice your skills in an informal setting.



---

## ACCOMMODATION

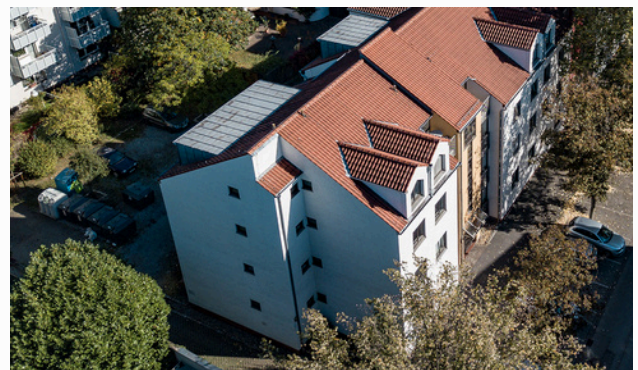
---

The student accommodation in Duisburg and Essen is not run by the university. There are several residences which are run by the Studierendenwerk, a student welfare services organisation. They aim to offer accommodation to all exchange students.

If you decide to apply for accommodation through the Studierendenwerk, you will need to wait until after you have received your admission letter. You can find contact details and further information on the [Studierendenwerk website](#).



The photos below are from the website of the Studierendenwerk and show two of the multiple Student Residence buildings in Essen (left) and Duisburg (right).



# APPLICATION PROCESS

## 1 Nomination

Home university sends nomination email to [exchange.incoming@uni-due.de](mailto:exchange.incoming@uni-due.de)

### Deadlines:

Winter Semester **1st May**  
Summer Semester **1st Nov**

## 2 Application

UDE contacts students after the nomination deadline with link to online application form

### Deadlines:

Winter Semester **1st June**  
Summer Semester **1st Dec**

## 3 Admission

UDE sends admission letters, enabling students to apply for visas and accommodation

### Usually:

Winter Semester **July**  
Summer Semester **Jan**

## 4 Enrolment

Official enrolment takes place on Arrival Day and there will be orientation days with chances to ask questions and meet other exchange students

### Usually:

Winter Semester **early October**  
Summer Semester **early April**







# SUPPORT FOR INCOMING STUDENTS

## Welcome Days

A few days to settle in before the lectures begin! We provide orientation sessions offering a chance to ask questions and get to know fellow exchange students and the International Office Staff.

## Tutors

Still worried about living in a foreign country? Fellow students working as tutors from ISAAC (International Student Activity and Assistance Club) will be there to help you in the first few days and beyond. They hold regular info sessions for questions about (student) life in Germany as well as organising fun excursions and social events throughout the semester so that you can meet new people and visit local attractions. Previous trips have included Freiburg, Munich and Berlin.

## Buddy Program

ISAAC runs a Buddy Program to match you with a volunteer UDE student who can provide one-to-one support, particularly in the first weeks after your arrival.

## Faculty Support

Each student will have an academic supervisor within their faculty. Some faculties even have their own support centres dedicated to the needs of international students.

## International Office

The Incomings Team has regular office hours and is there to support you throughout your stay.

---

**WE ARE AN OPEN-  
MINDED,  
INTERNATIONAL  
UNIVERSITY**

**APPROX. 16% OF OUR  
STUDENTS ARE  
INTERNATIONAL  
STUDENTS FROM OVER  
125 DIFFERENT  
COUNTRIES**

**WE OFFER A RANGE OF  
TAILOR-MADE  
OPPORTUNITIES FOR  
INTERNATIONAL  
STUDENTS**

---

# FACULTY CONTACTS

## CAMPUS ESSEN

### FACULTY OF HUMANITIES

Ramona Karatas

erasmus-incomings.geiwi@uni-due.de

### FACULTY OF EDUCATIONAL SCIENCES

Dr. Bita Behravan

bita.behravan@uni-due.de

### FACULTY OF BIOLOGY

Dr. Nadine Ruchter

nadine.ruchter@uni-due.de

### FACULTY OF CHEMISTRY

Prof. Dr. Georg Jansen

georg.jansen@uni-due.de

### FACULTY OF MATHEMATICS

Prof. Dr. Andreas Gastel

andreas.gastel@uni-due.de

### FACULTY OF MEDICINE

Petra Liebig

petra.liebig@uni-due.de

### FACULTY OF ECONOMICS AND BUSINESS ADMINISTRATION

*International Economics*

Sigrid Janetzki

sekretariat.iwb@vwl.uni-due.de

*Energy Trading and Finance*

Dr. Alexandra Hoffert

alexandra.hoffert@uni-due.de

## CAMPUS DUISBURG

### MERCATOR SCHOOL OF MANAGEMENT

Lena Grünhagen &

Dr. Stefan de Dios Panal

io.msm@uni-due.de

### FACULTY OF ENGINEERING

Iris Steiner

iris.steiner@uni-due.de

### FACULTY OF PHYSICS

Dr. Anne-Kristin Pusch

anne-kristin.pusch@uni-due.de

### FACULTY OF SOCIAL SCIENCES

*Sociology/ Social Sciences*

Tanja Tästensen

soc-internat@uni-due.de

*Political Sciences*

Dr. Georg Lammich

georg.lammich@uni-due.de

*Institute of East Asian Studies*

IN-EAST Welcome Office

iwo@uni-due.de

### FACULTY OF COMPUTER SCIENCE

*Core Informatics*

Prof. Dr. Barbara König

barbara\_koenig@uni-due.de

*Human-Centered Computing and*

*Cognitive Science*

Prof. Dr. Nicole Krämer

nicole.kraemer@uni-due.de

*Software Engineering*

Sheila Clément

sheila.clement@uni-due.de

*Business Informatics*

Anna Khodijah

anna.khodijah@uni-due.de

UNIVERSITÄT  
DUISBURG  
ESSEN

*Open-Minded*